

#### LEGEND

#### COMPOSITION

04.10	FLOOR CONSTRUCTION
04.12	PROTECTIVE CONCRETE SCREED MIN. 50 MM
(04.13)	CEMENT SCREED MIN. 30 MM
08.20	PE MEMBRANE
08.10	SEPARATION FABRIC - NON WOVEN GEOTEXTILE
05.00	WATERPROFING MEMBRANE FATRAFOL - H
08.10	SEPARATION FABRIC - NON WOVEN GEOTEXTILE
04.11	REINFORCED CONCRETE BASE
01.20	SOIL

Horizontal waterproofing barrier on concrete base

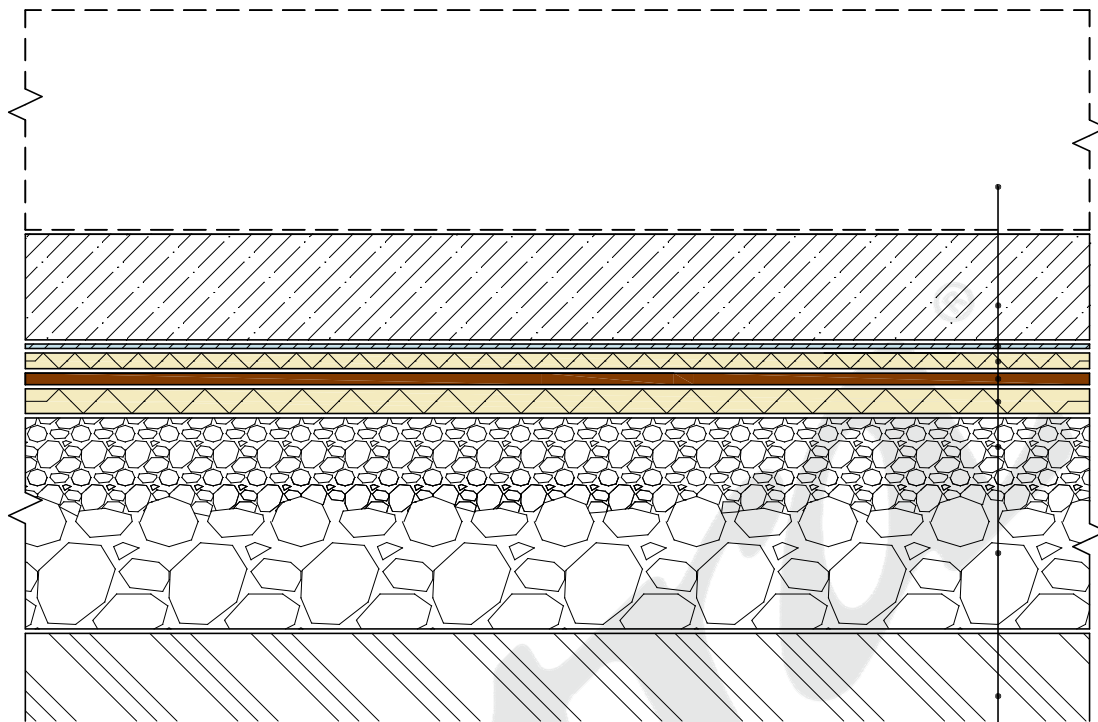
DATE

5/2015

**fatra**

Fatra, a.s., třída Tomáše Bati 1541, 763 61 Napajedla, Czech republic  
tel. +420 577 501 111, fax. +420 577 502 555, e-mail: info@fatrafol.cz, www.fatrafol.cz, www.fatra.cz

**DETAIL 101 H**



— 04.10  
 — 04.12 (04.13)  
 — 08.20  
 — 08.12  
 — 05.00  
 — 08.13  
 — 01.11  
 — 01.12  
 — 01.20

#### LEGEND

#### COMPOSITION

04.10	FLOOR CONSTRUCTION
04.12	PROTECTIVE CONCRETE SCREED MIN. 50 MM (04.13) CEMENT SCREED MIN. 30 MM
08.20	PE MEMBRANE
08.12	SEPARATION FABRIC - NON WOVEN GEOTEXTILE FATRATEX 300
05.00	WATERPROFING MEMBRANE FATRAFOL - H
08.13	SEPARATION FABRIC - NON WOVEN GEOTEXTILE FATRATEX 500
01.11	COMPACTED CRUSHED GRAVEL FRICTION 0-4
01.12	COMPACTED CRUSHED GRAVEL FRICTION 16-32
01.20	SOIL

Horizontal waterproofing barrier on compacted substrate

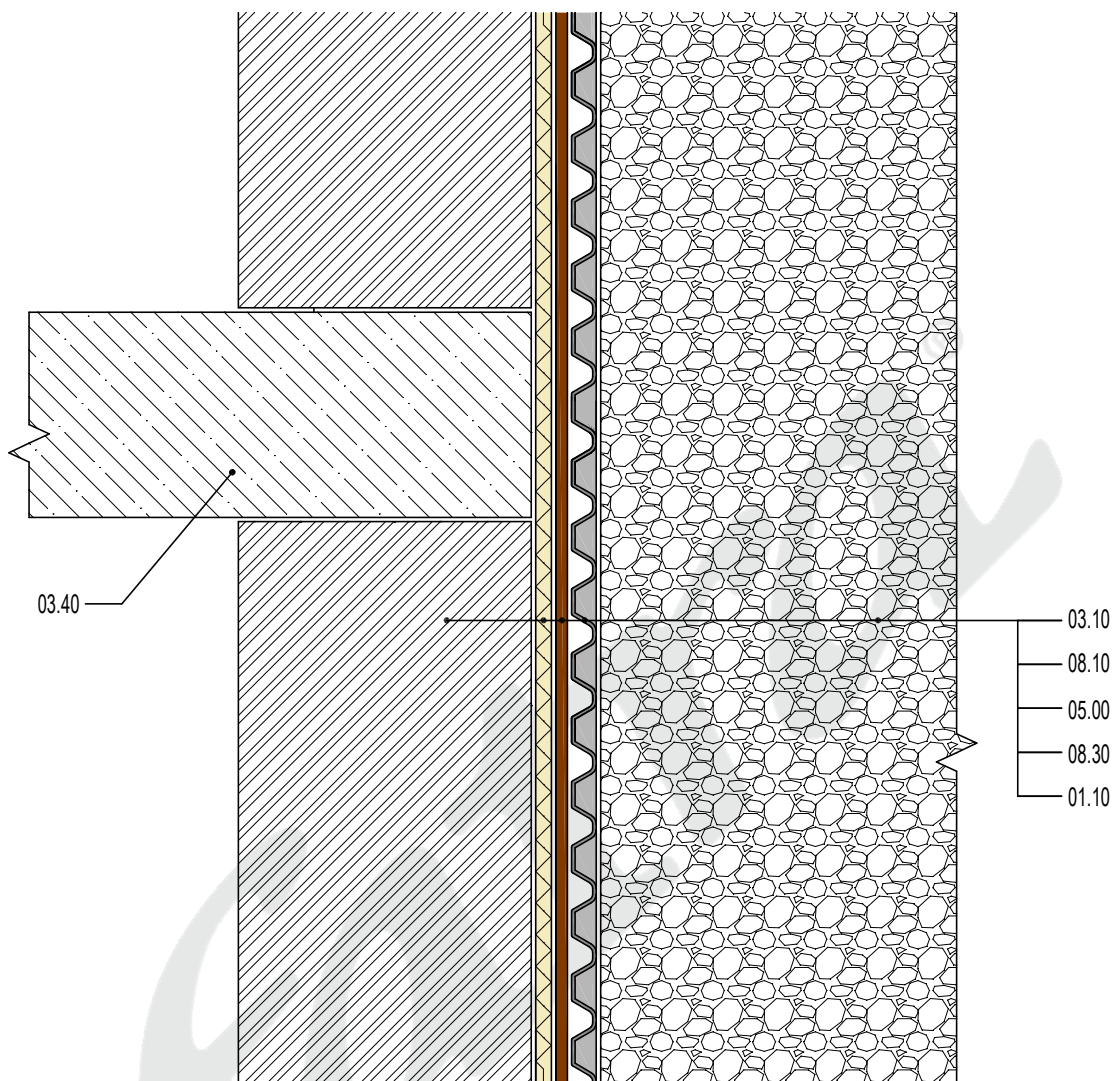
DATE

5/2014

**fatra**

Fatra, a.s., třída Tomáše Bati 1541, 763 61 Napajedla, Czech republic  
 tel. +420 577 501 111, fax. +420 577 502 555, e-mail: info@fatrafol.cz, www.fatrafol.cz, www.fatra.cz

**DETAIL 102 H**



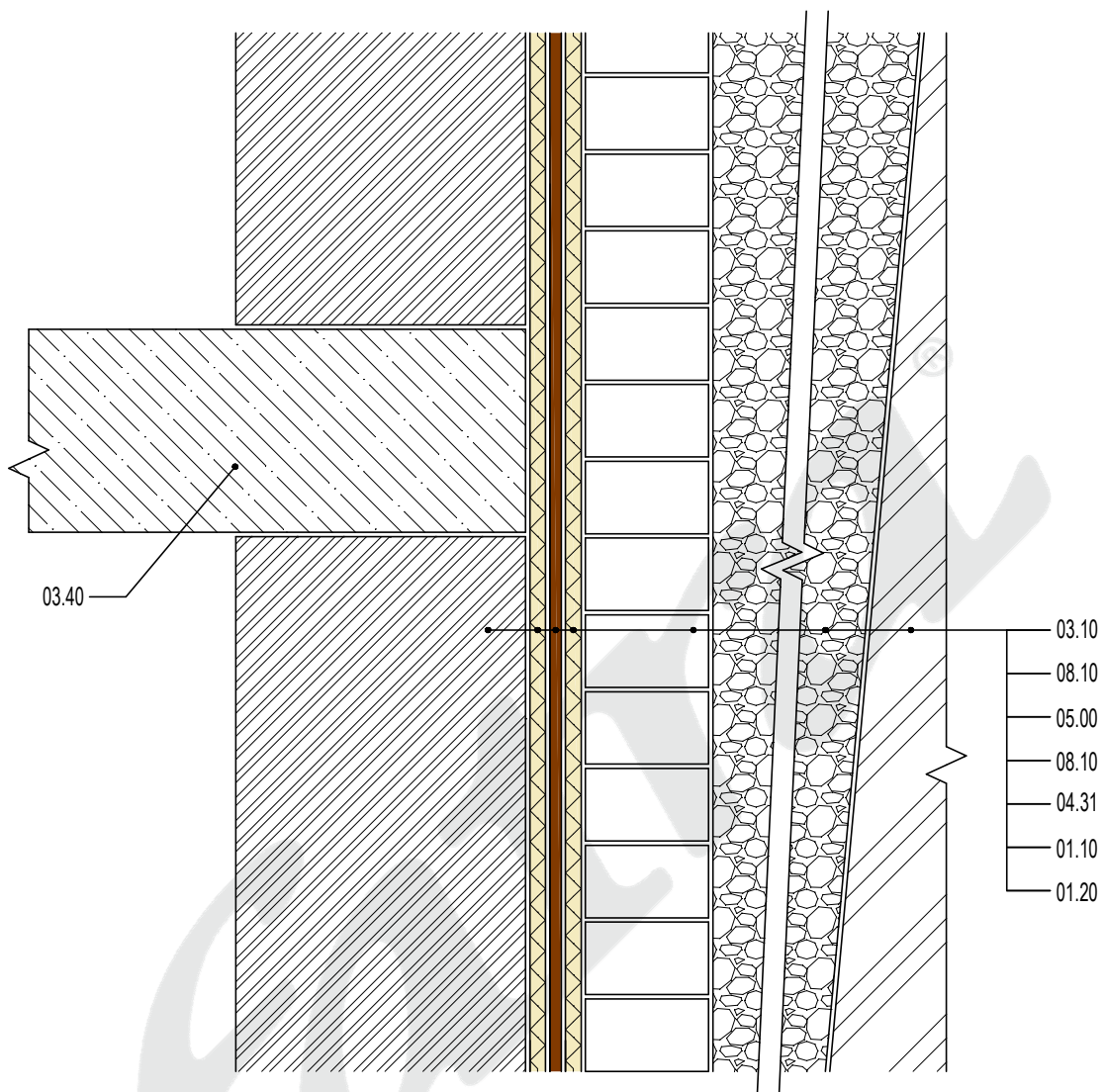
#### LEGEND

##### COMPOSITION

03.10	BASEMENT WALL
08.10	SEPARATION FABRIC - NON WOVEN GEOTEXTILE
05.00	WATERPROFING MEMBRANE FATRAFOL - H
08.30	DRAINAGE MEMBRANE
01.10	MINE STONE

##### ACCESSORIES

03.40	CEILING SLAB
-------	--------------



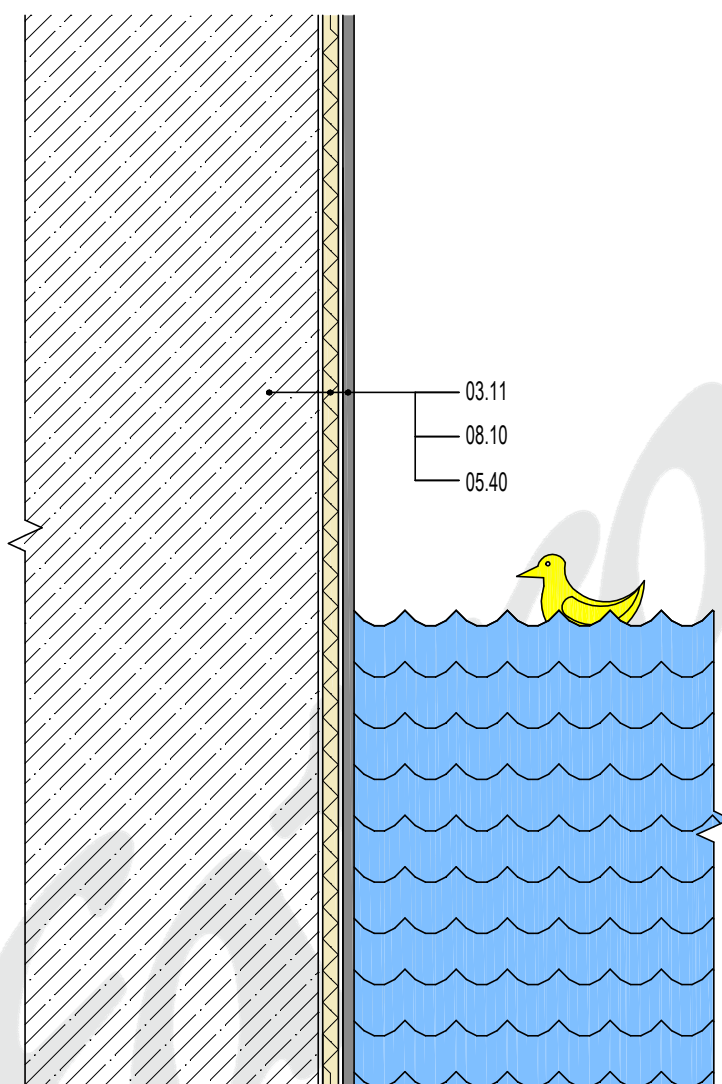
#### LEGEND

##### COMPOSITION

03.10	BASEMENT WALL
08.10	SEPARATION FABRIC - NON WOVEN GEOTEXTILE
05.00	WATERPROFING MEMBRANE FATRAFOL - H
08.10	SEPARATION FABRIC - NON WOVEN GEOTEXTILE
04.31	MASONRY WALL
01.10	MINE STONE
01.20	SOIL

##### ACCESSORIES

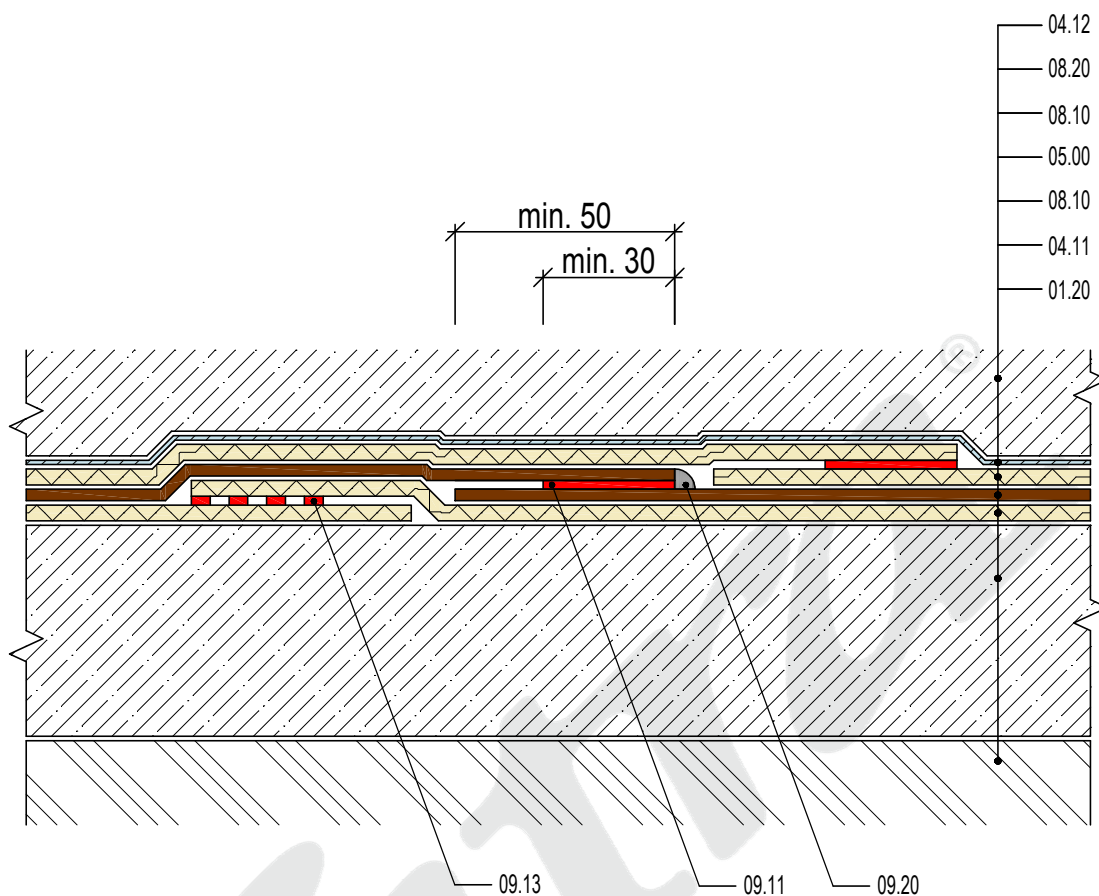
03.40	CEILING SLAB
-------	--------------



LEGEND

COMPOSITION

- 03.11 STEEL REINFORCED CONCRETE BASEMENT WALL
- 08.10 SEPARATION FABRIC - NON WOVEN GEOTEXTILE
- 05.40 MEMBRANE SUITABLE FOR CONTACT WITH DRINKING WATER



#### LEGEND

##### COMPOSITION

04.12	PROTECTIVE CONCRETE SCREED MIN. 50 MM
08.20	PE MEMBRANE
08.10	SEPARATION FABRIC - NON WOVEN GEOTEXTILE
<b>05.00</b>	<b>WATERPROFING MEMBRANE FATRAFOL - H</b>
08.10	SEPARATION FABRIC - NON WOVEN GEOTEXTILE
04.11	REINFORCED CONCRETE BASE
01.20	SOIL

##### ACCESSORIES

09.11	HOT AIR WELD
09.13	SPOT HOT AIR WELD
09.20	SEALING COMPOUND

Single seam weld in membrane overlap

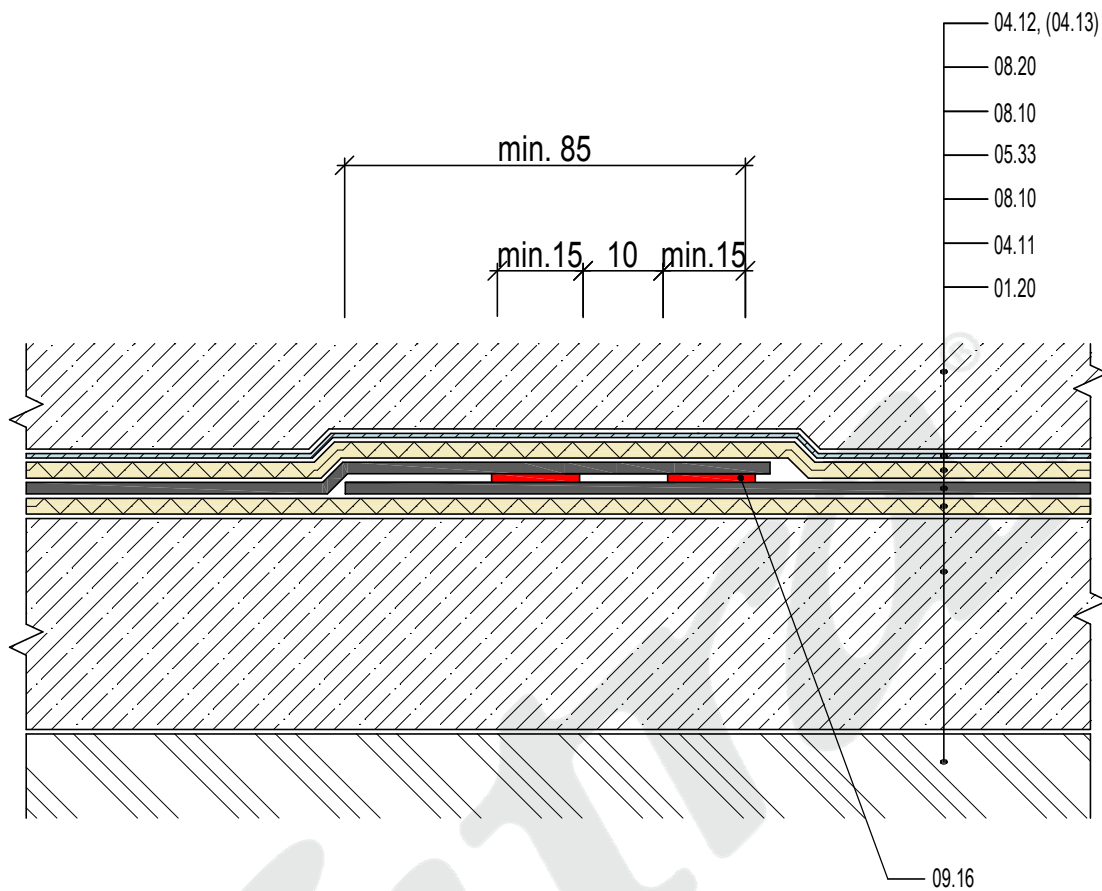
DATE

05/2015

**fatra**

Fatra, a.s., třída Tomáše Bati 1541, 763 61 Napajedla, Czech republic  
tel. +420 577 501 111, fax. +420 577 502 555, e-mail: info@fatrafol.cz, www.fatrafol.cz, www.fatra.cz

**DETAIL 201 H**



LEGEND

COMPOSITION

- 04.12 PROTECTIVE CONCRETE SCREED MIN. 50 MM
- (04.13) CEMENT SCREED MIN. 30 MM
- 08.20 PE MEMBRANE
- 08.10 SEPARATION FABRIC - NON WOVEN GEOTEXTILE
- 05.33** MEMBRANE EKOTEN 915
- 08.10 SEPARATION FABRIC - NON WOVEN GEOTEXTILE
- 04.11 REINFORCED CONCRETE BASE
- 01.20 SOIL

ACCESSORIES

- 09.16 HOT WEDGE WELD

Double seam weld in membrane overlap

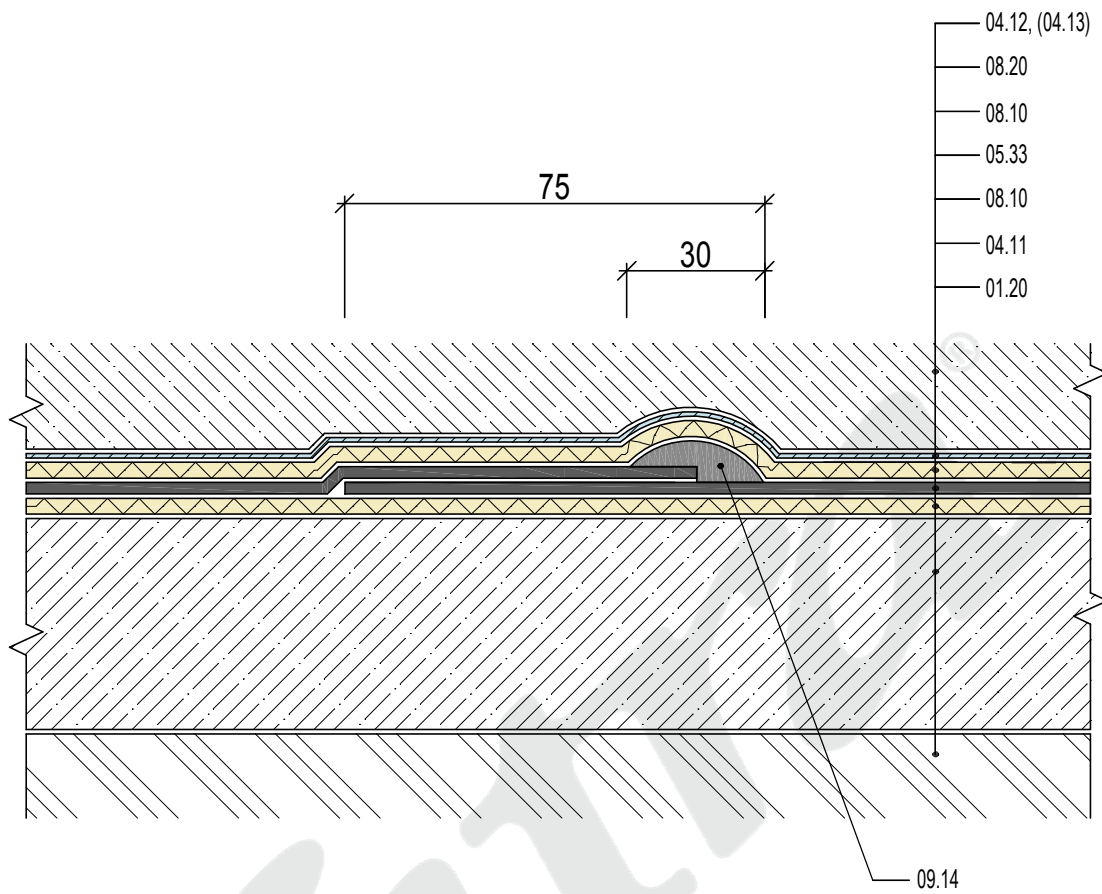
DATE

5/2015



Fatra, a.s., třída Tomáše Bati 1541, 763 61 Napajedla, Czech republic  
 tel. +420 577 501 111, fax. +420 577 502 555, e-mail: info@fatrafol.cz, www.fatrafol.cz, www.fatra.cz

**DETAIL 202 H**



#### LEGEND

##### COMPOSITION

04.12	PROTECTIVE CONCRETE SCREED MIN. 50 MM (04.13) CEMENT SCREED MIN. 30 MM
08.20	PE MEMBRANE
08.10	SEPARATION FABRIC - NON WOVEN GEOTEXTILE
05.33	MEMBRANE EKOTEN 915
08.10	SEPARATION FABRIC - NON WOVEN GEOTEXTILE
04.11	REINFORCED CONCRETE BASE
01.20	SOIL

##### ACCESSORIES

09.14	EXTRUSION WELDING
-------	-------------------

Extrusion welding

DATE

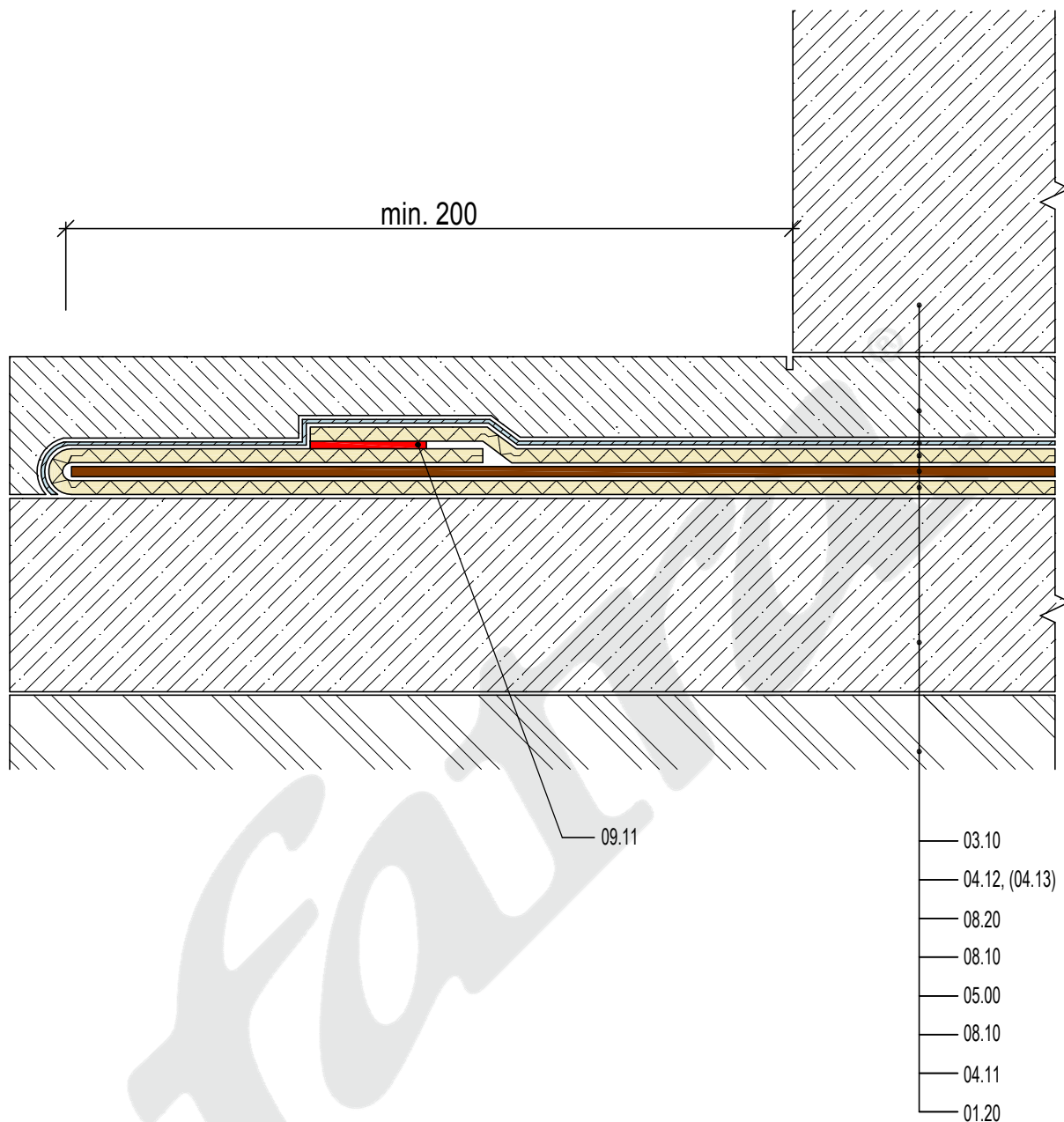
05/2015

**fatra**

Fatra, a.s., třída Tomáše Bati 1541, 763 61 Napajedla, Czech republic  
tel. +420 577 501 111, fax. +420 577 502 555, e-mail: info@fatrafol.cz, www.fatrafol.cz, www.fatra.cz

**DETAIL 203 H**





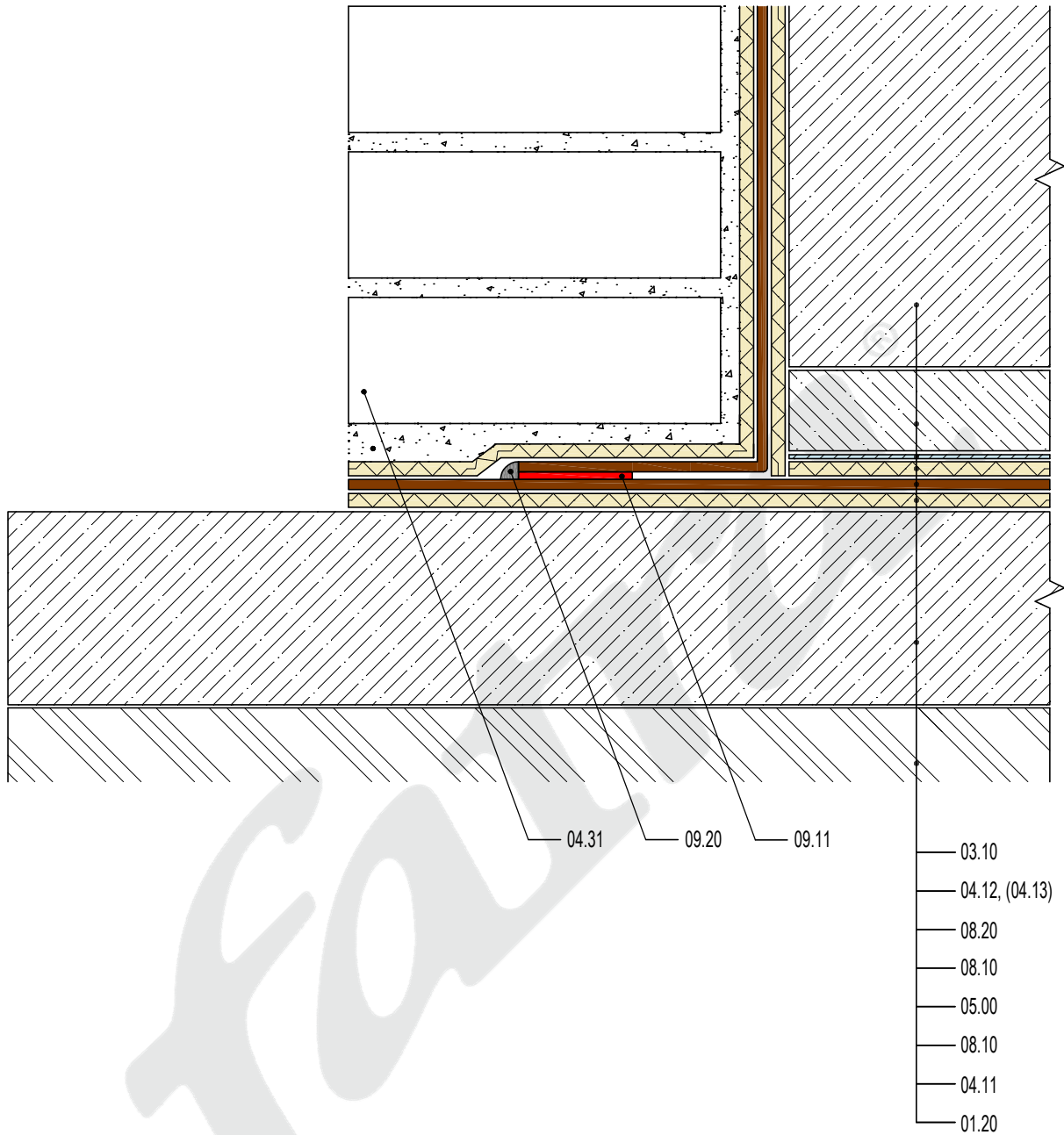
LEGEND

COMPOSITION

- 03.10 BASEMENT WALL
- 04.12 PROTECTIVE CONCRETE SCREED MIN. 50 MM  
(04.13) CEMENT SCREED MIN. 30 MM
- 08.20 PE MEMBRANE
- 08.10 SEPARATION FABRIC - NON WOVEN GEOTEXTILE
- 05.00 WATERPROFING MEMBRANE FATRAFOL - H
- 08.10 SEPARATION FABRIC - NON WOVEN GEOTEXTILE
- 04.11 REINFORCED CONCRETE BASE
- 01.20 SOIL

ACCESSORIES

- 09.11 HOT AIR WELD



#### LEGEND

##### COMPOSITION

03.10	BASEMENT WALL
04.12	PROTECTIVE CONCRETE SCREED MIN. 50 MM
(04.13)	CEMENT SCREED MIN. 30 MM
08.20	PE MEMBRANE
08.10	SEPARATION FABRIC - NON WOVEN GEOTEXTILE
<b>05.00</b>	<b>WATERPROFING MEMBRANE FATRAFOL - H</b>
08.10	SEPARATION FABRIC - NON WOVEN GEOTEXTILE
04.11	REINFORCED CONCRETE BASE
01.20	SOIL

##### ACCESSORIES

04.31	MASONRY WALL
09.11	HOT AIR WELD
09.20	SEALING COMPOUND

Membranes counter joint at lower edge of slab foundation - phase 2

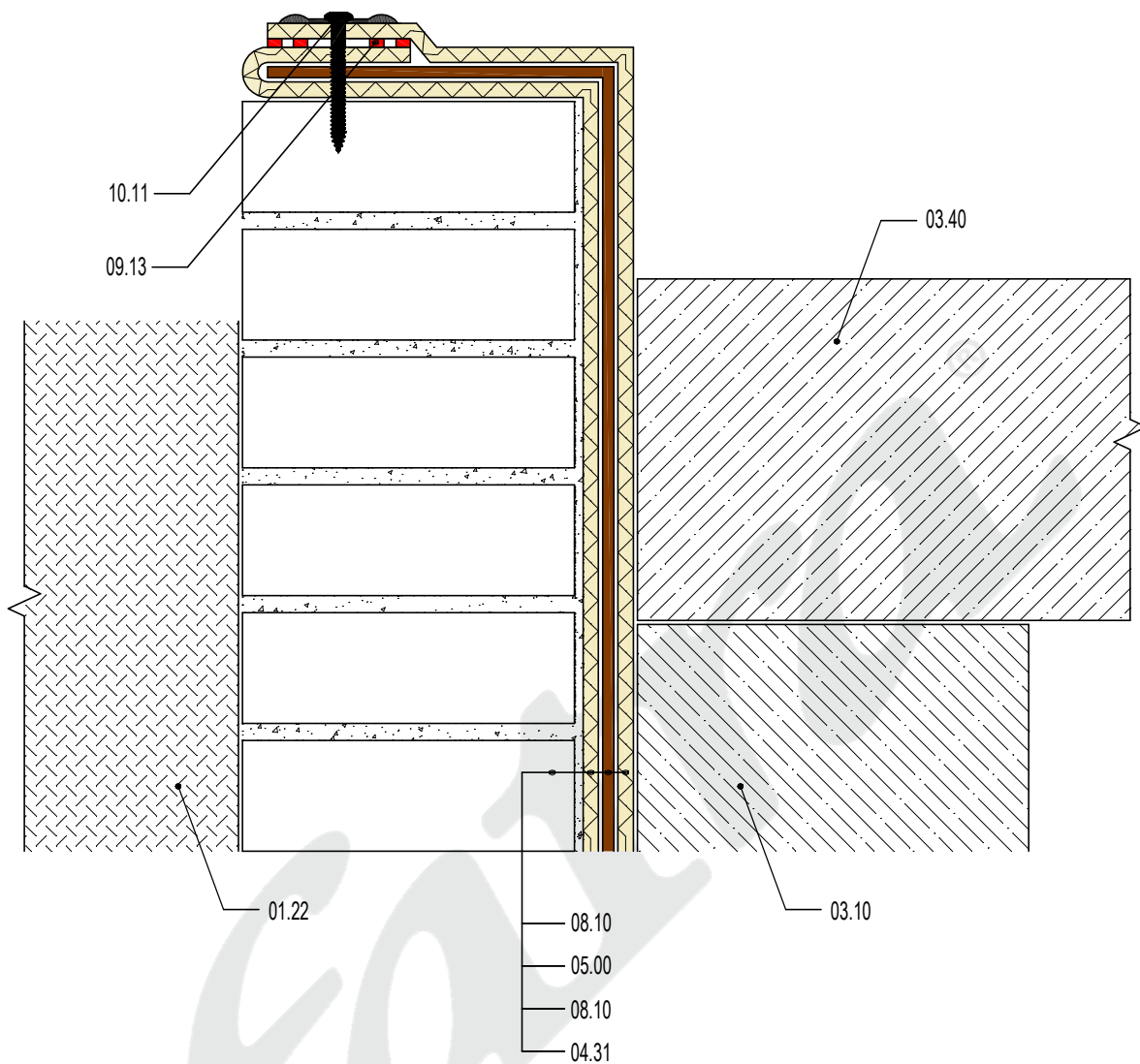
DATE

5/2015

**fatra**

Fatra, a.s., třída Tomáše Bati 1541, 763 61 Napajedla, Czech republic  
tel. +420 577 501 111, fax. +420 577 502 555, e-mail: info@fatrafol.cz, www.fatrafol.cz, www.fatra.cz

**DETAIL 206 H**



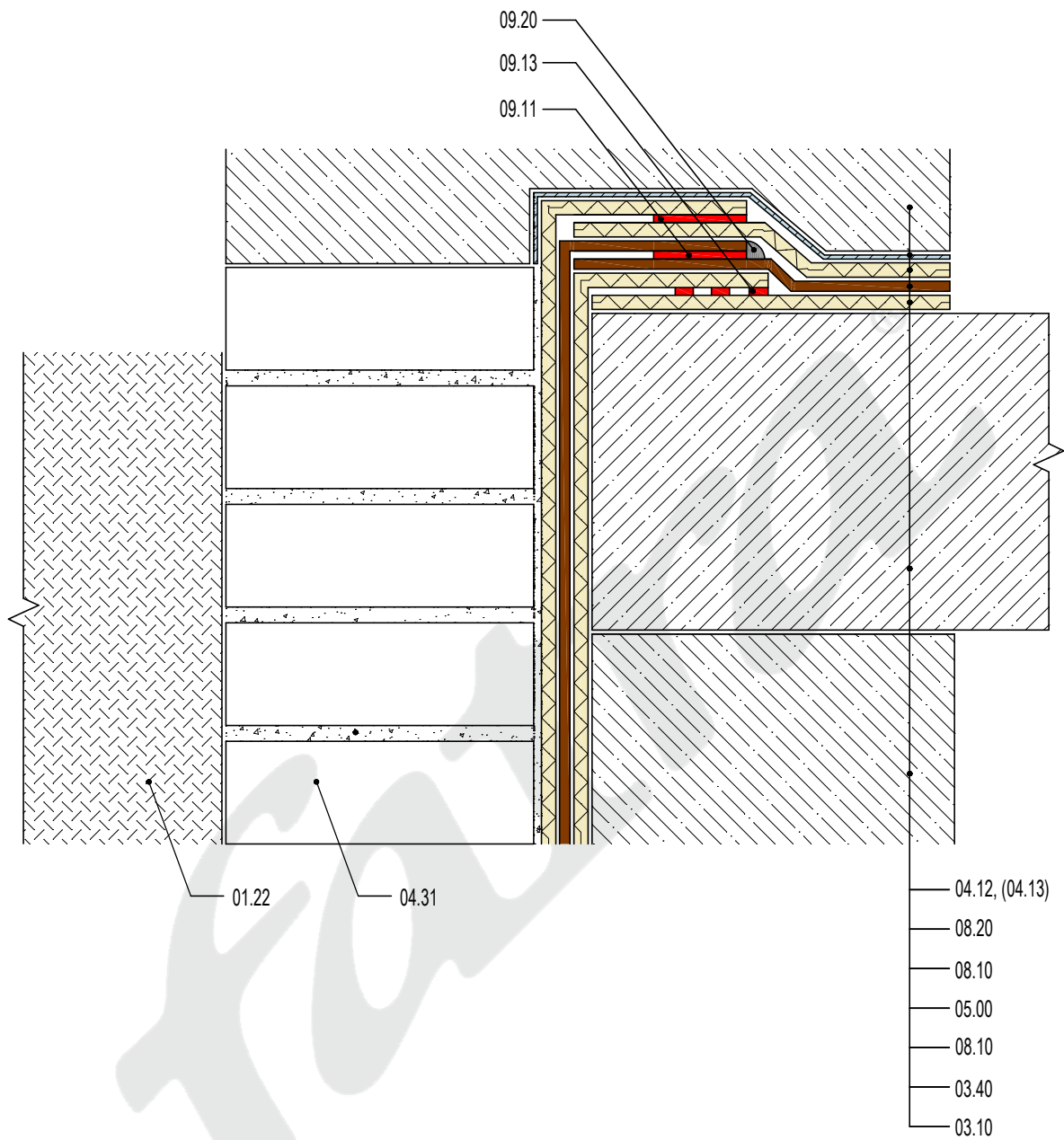
#### LEGEND

##### COMPOSITION

08.10	SEPARATION FABRIC - NON WOVEN GEOTEXTILE
<b>05.00</b>	<b>WATERPROFING MEMBRANE FATRAFOL - H</b>
08.10	SEPARATION FABRIC - NON WOVEN GEOTEXTILE
04.31	MASONRY WALL

##### ACCESSORIES

01.22	COMPACTED TRENCH BACKFILL
03.10	BASEMENT WALL
03.40	CEILING SLAB
09.13	SPOT HOT AIR WELD
10.11	MECHANICAL FASTENER WITH PLATE



#### LEGEND

#### COMPOSITION

04.12	PROTECTIVE CONCRETE SCREED MIN. 50 MM (04.13) CEMENT SCREED MIN. 30 MM
08.20	PE MEMBRANE
08.10	SEPARATION FABRIC - NON WOVEN GEOTEXTILE
05.00	WATERPROFING MEMBRANE FATRAFOL - H
08.10	SEPARATION FABRIC - NON WOVEN GEOTEXTILE
03.40	CEILING SLAB
03.10	BASEMENT WALL

#### ACCESSORIES

01.22	COMPACTED TRENCH BACKFILL
04.31	MASONRY WALL
09.11	HOT AIR WELD
09.13	SPOT HOT AIR WELD
09.20	SEALING COMPOUND

Joint of horizontal and vertical waterproofing barrier - phase 2

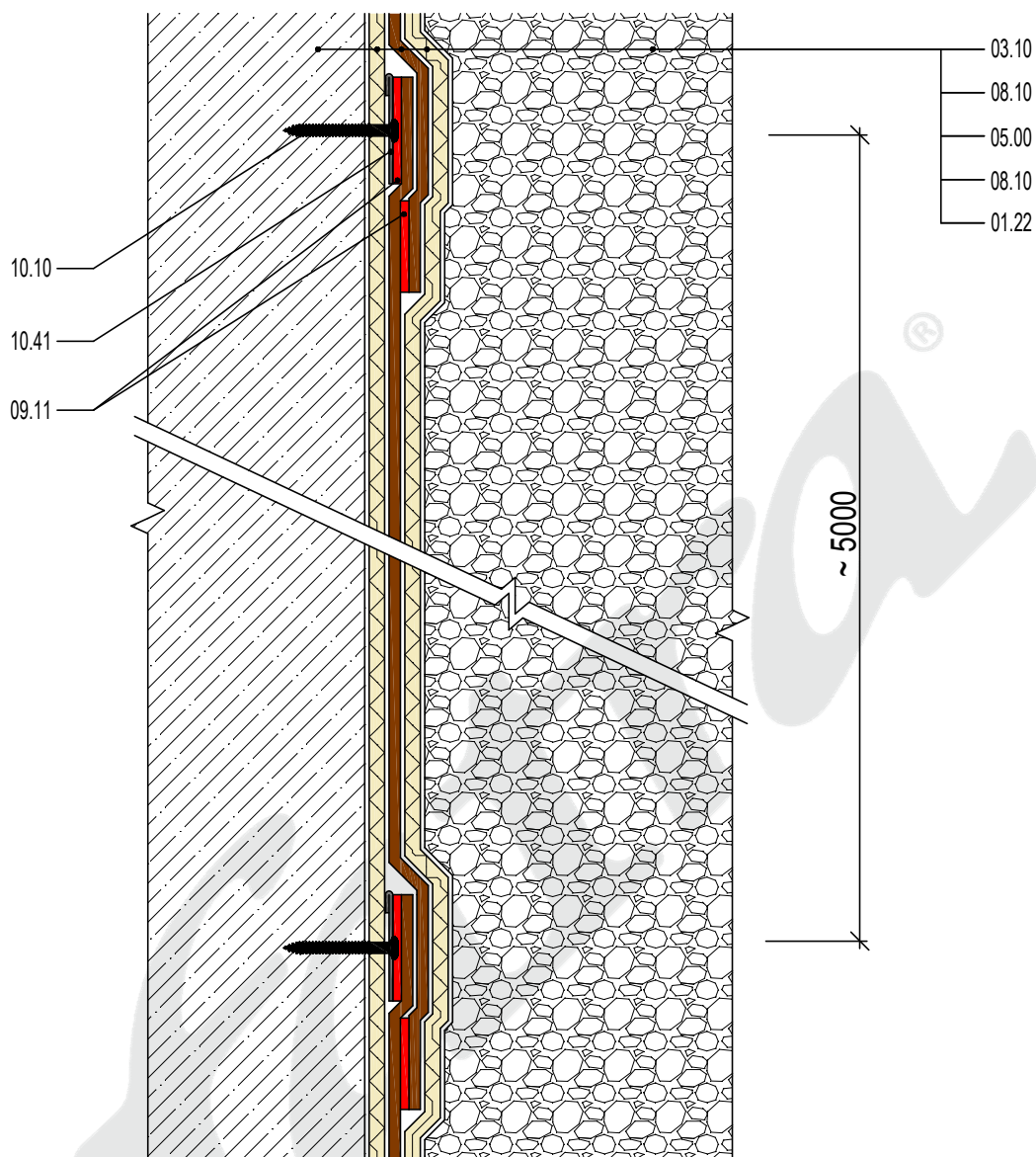
DATE

5/2015

**fatra**

Fatra, a.s., třída Tomáše Bati 1541, 763 61 Napajedla, Czech republic  
tel. +420 577 501 111, fax. +420 577 502 555, e-mail: info@fatrafol.cz, www.fatrafol.cz, www.fatra.cz

**DETAIL 208 H**



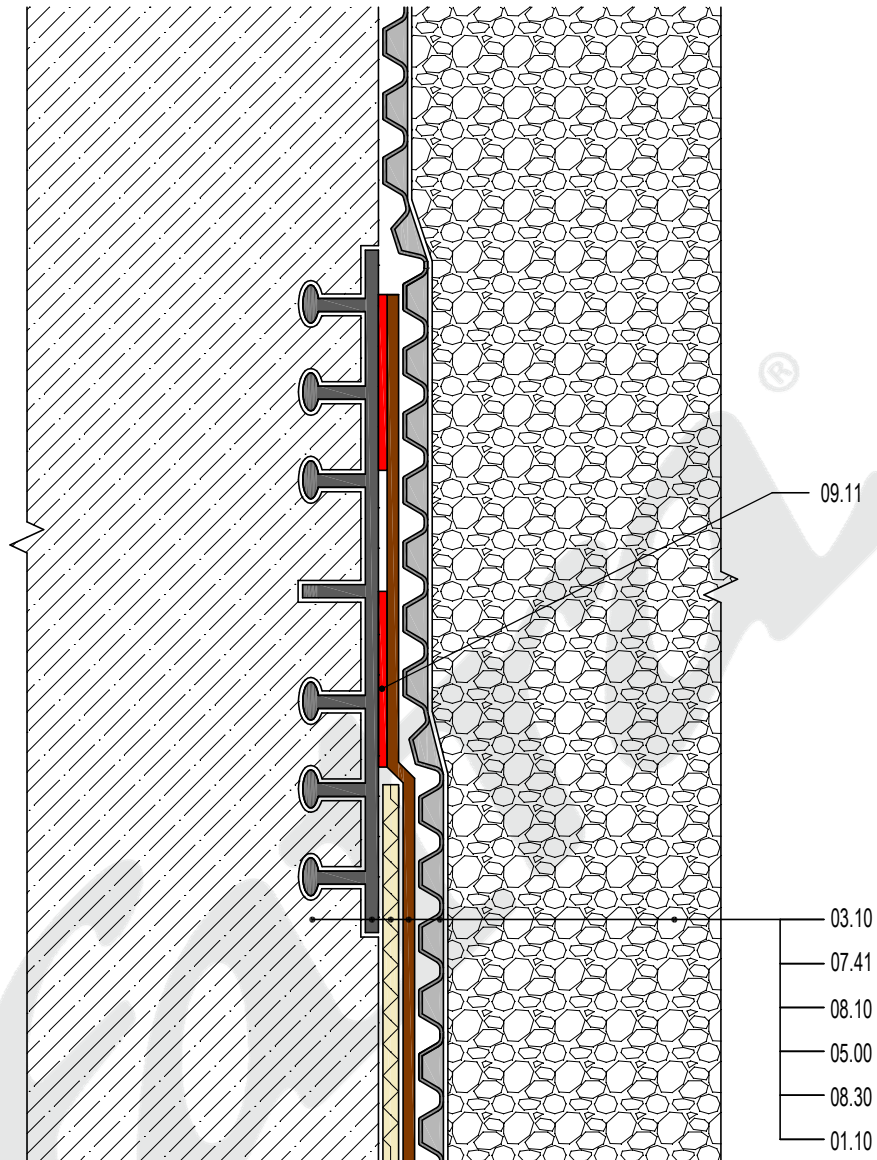
LEGEND

COMPOSITION

03.10	BASEMENT WALL
08.10	SEPARATION FABRIC - NON WOVEN GEOTEXTILE
<b>05.00</b>	<b>WATERPROFING MEMBRANE FATRAFOL - H</b>
08.10	SEPARATION FABRIC - NON WOVEN GEOTEXTILE
01.10	MINE STONE

ACCESSORIES

09.11	HOT AIR WELD
10.10	MECHANICAL FASTENER
10.41	STRIP OF PLASTIC COATED SHEET METAL FATRANYL



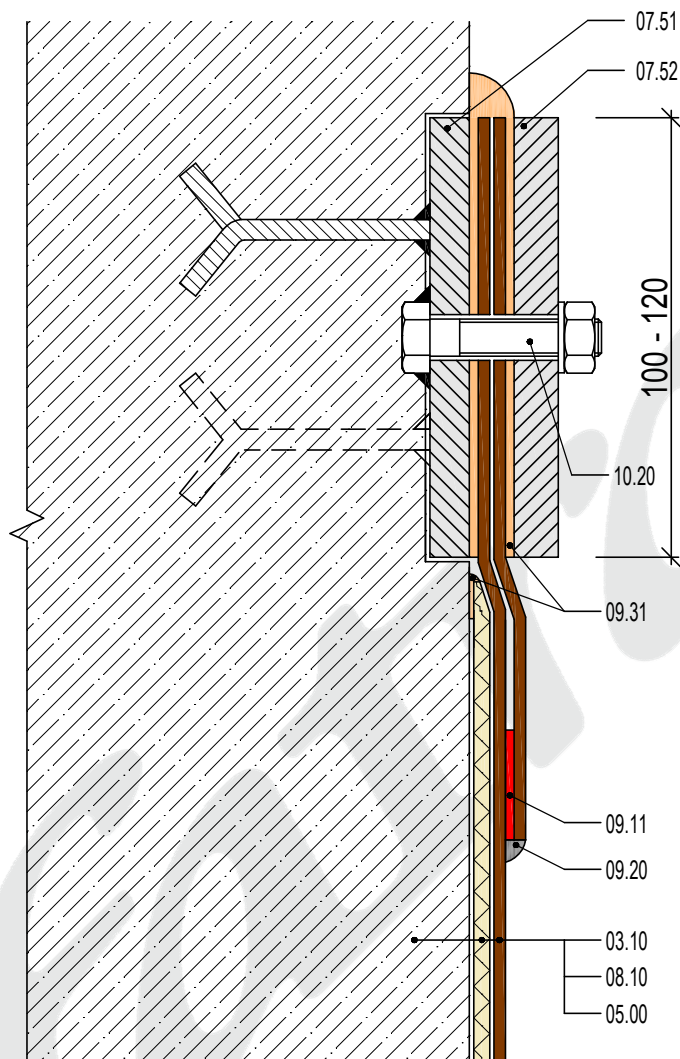
#### LEGEND

##### COMPOSITION

03.10	BASEMENT WALL
07.41	PERIPHERAL WATER BAR
08.10	SEPARATION FABRIC - NON WOVEN GEOTEXTILE
<b>05.00</b>	<b>WATERPROFING MEMBRANE FATRAFOL - H</b>
08.30	DRAINAGE MEMBRANE
01.10	MINE STONE

##### ACCESSORIES

09.11	HOT AIR WELD
-------	--------------



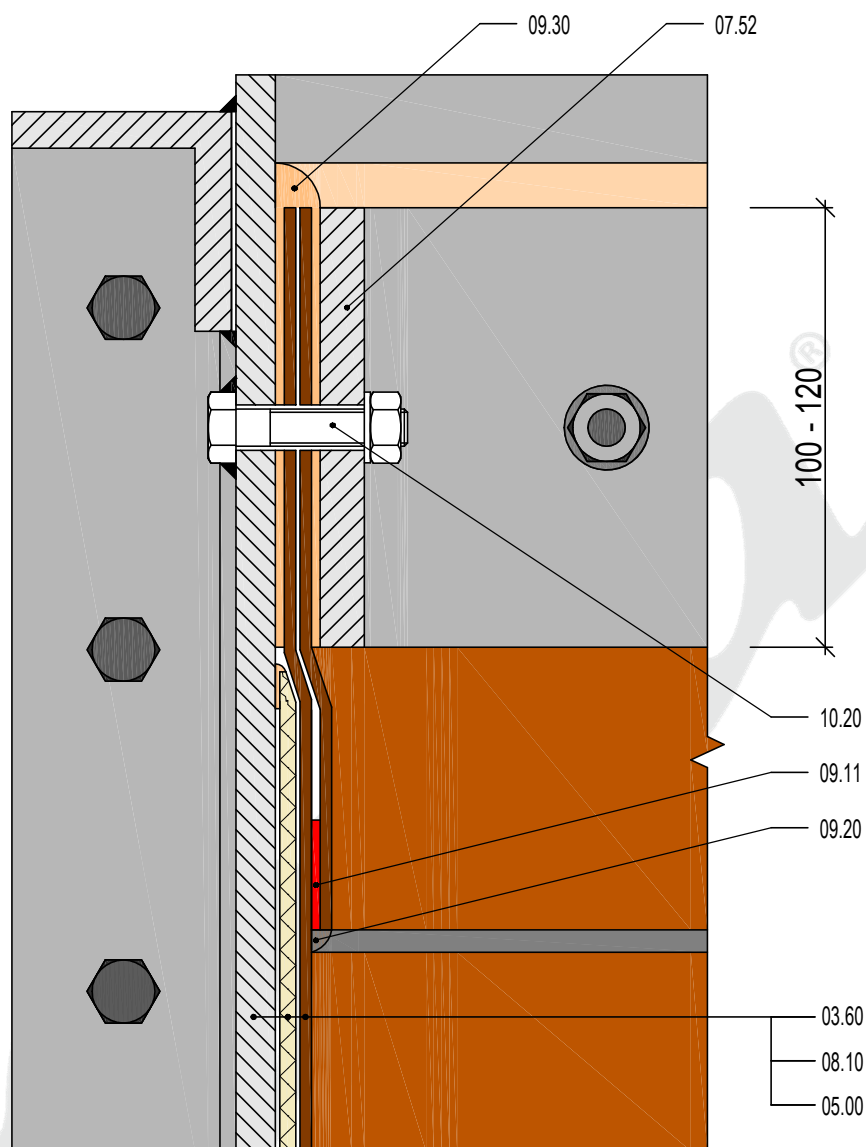
#### LEGEND

##### COMPOSITION

03.10	BASEMENT WALL
08.10	SEPARATION FABRIC - NON WOVEN GEOTEXTILE
<b>05.00</b>	<b>WATERPROFING MEMBRANE FATRAFOL - H</b>

##### ACCESSORIES

07.51	FIXED STEEL FLANGE
07.52	LOOSE STEEL FLANGE
09.11	HOT AIR WELD
09.20	SEALING COMPOUND
09.31	PU SEALANT
10.20	JOINT FASTENER



#### LEGEND

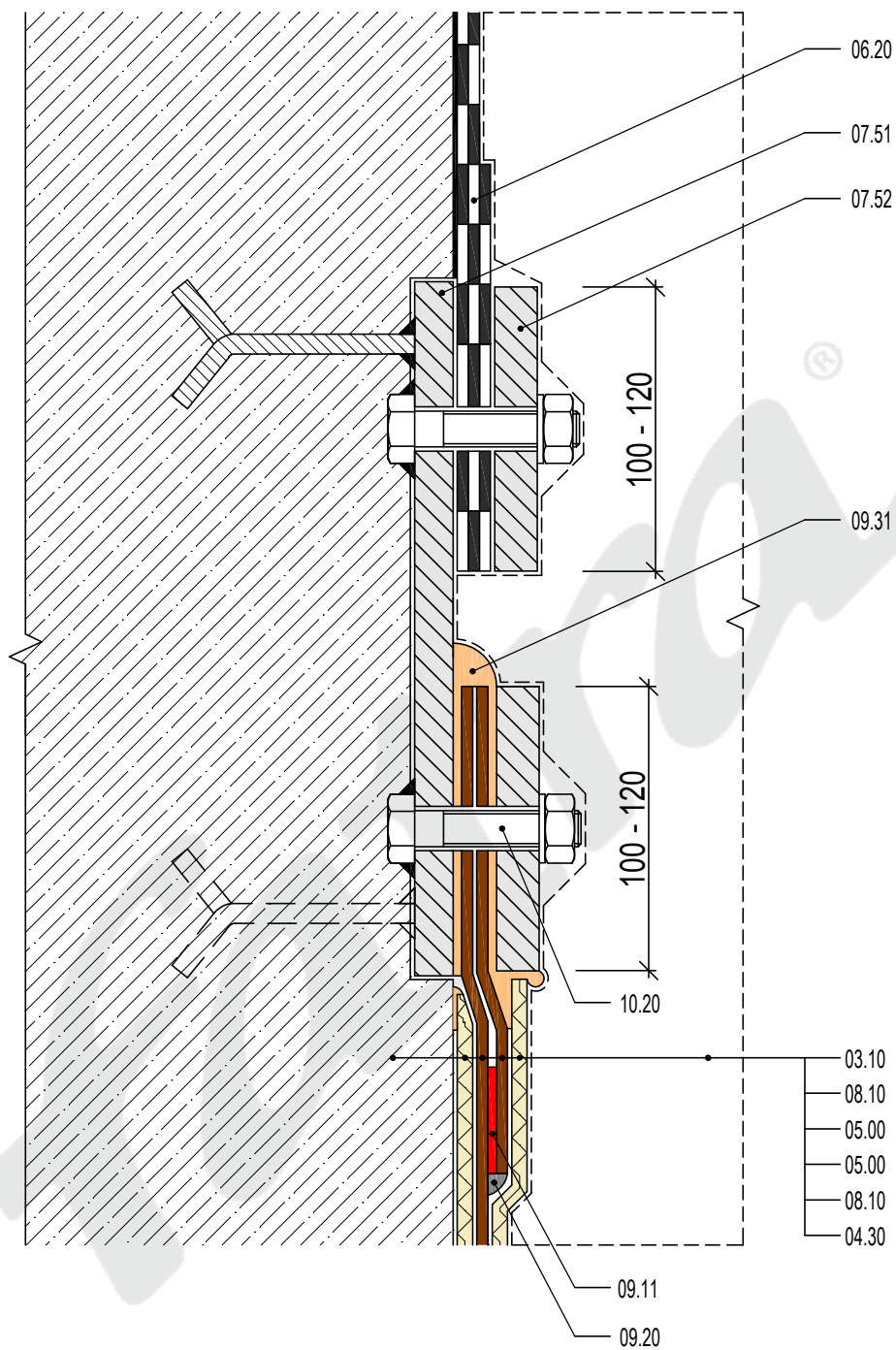
#### COMPOSITION

03.60	STEEL SHELL
08.10	SEPARATION FABRIC - NON WOVEN GEOTEXTILE
<b>05.00</b>	<b>WATERPROFING MEMBRANE FATRAFOL - H</b>

#### ACCESSORIES

07.52	LOOSE STEEL FLANGE
09.11	HOT AIR WELD
09.20	SEALING COMPOUND
09.30	SEALANT
10.20	JOINT FASTENER





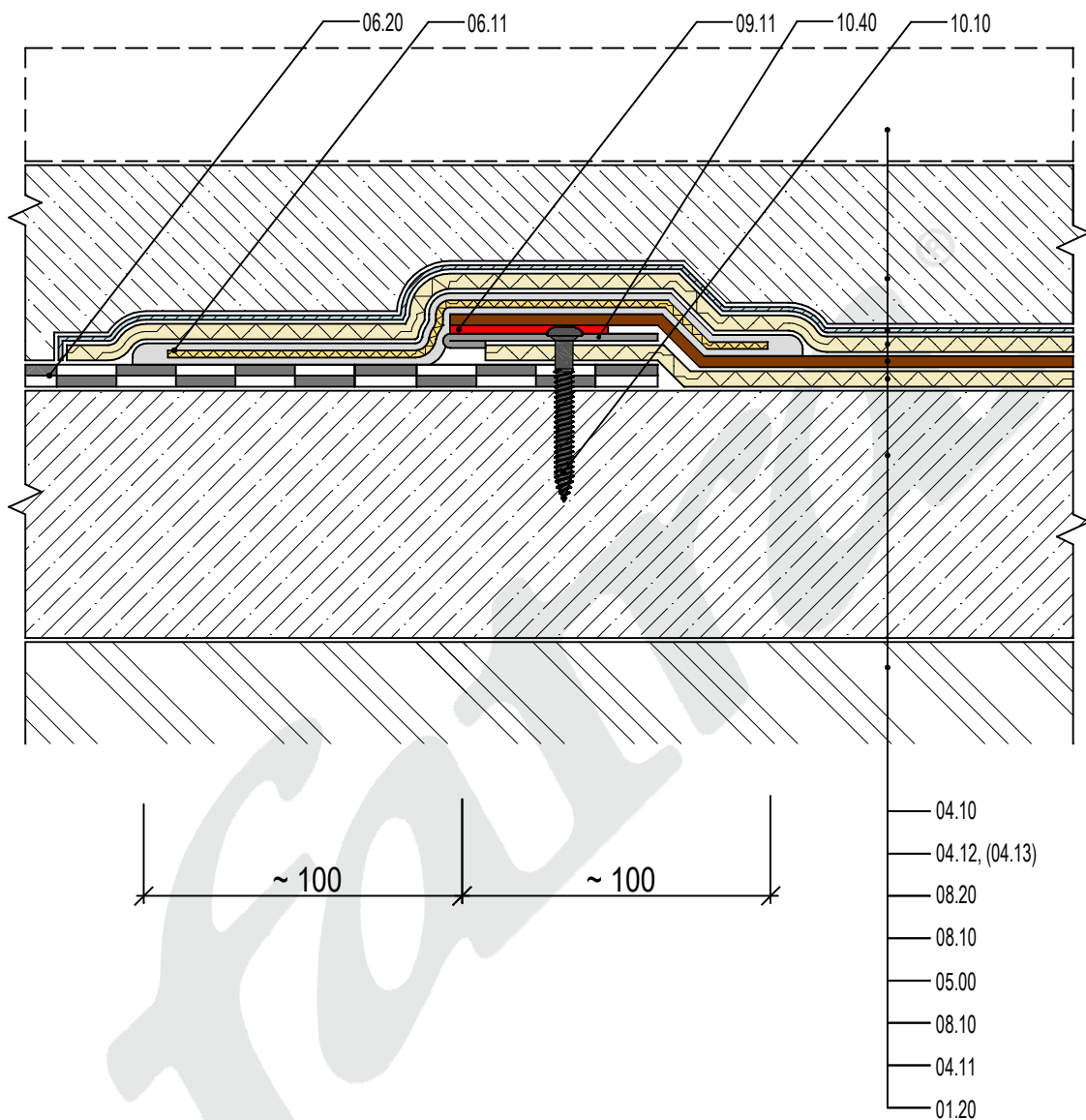
LEGEND

COMPOSITION

03.10	BASEMENT WALL
08.10	SEPARATION FABRIC - NON WOVEN GEOTEXTILE
<b>05.00</b>	<b>WATERPROFING MEMBRANE FATRAFOL - H</b>
<b>05.00</b>	<b>WATERPROFING MEMBRANE FATRAFOL - H</b>
08.10	SEPARATION FABRIC - NON WOVEN GEOTEXTILE
04.30	WATERPROOFING MEMBRANE PROTECTIVE LAYER

ACCESSORIES

06.20	BITUMINOUS WATERPROOFING LAYER
07.51	FIXED STEEL FLANGE
07.52	LOOSE STEEL FLANGE
09.20	SEALING COMPOUND
09.31	PU SEALANT
10.20	JOINT FASTENER



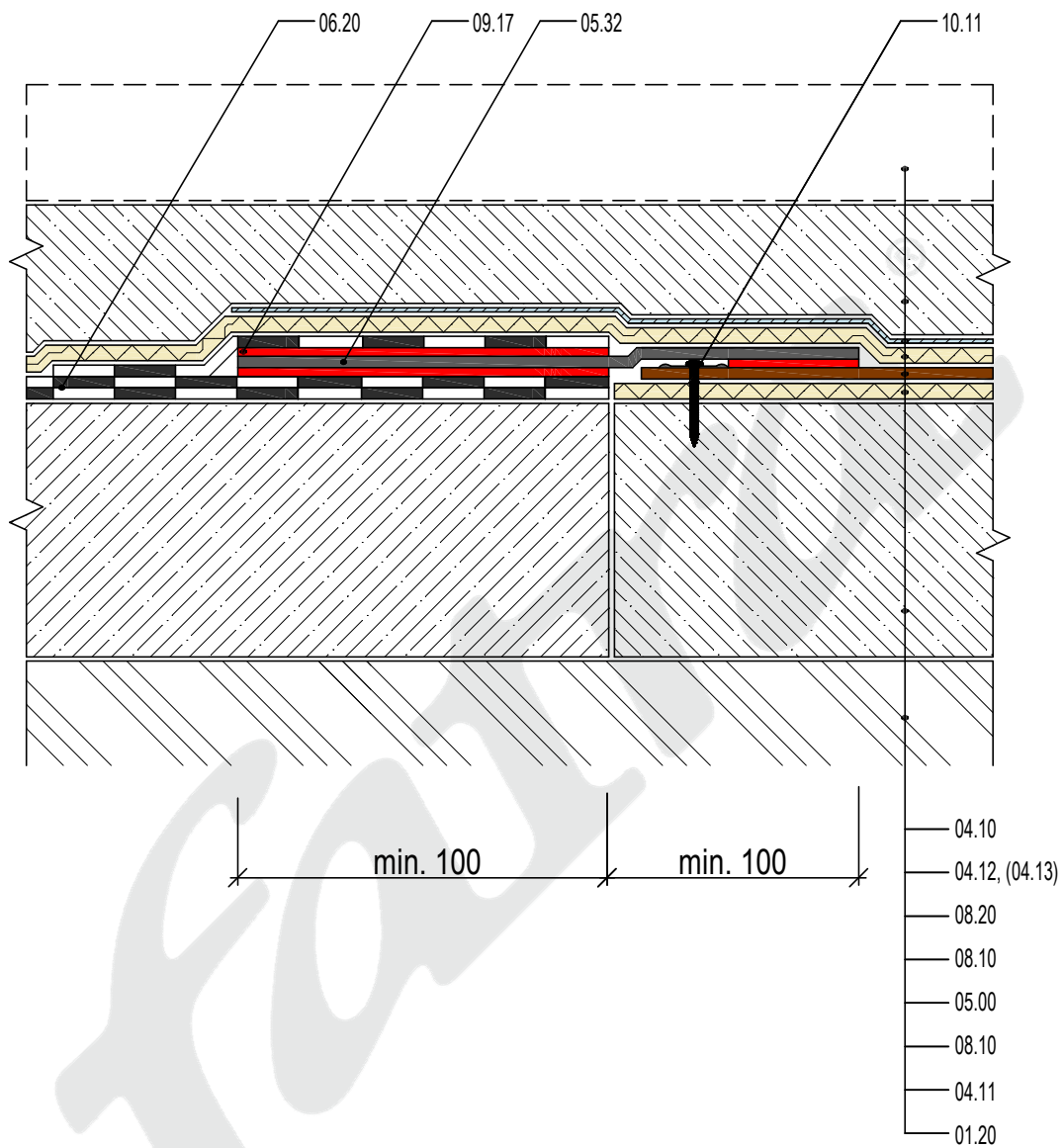
#### LEGEND

##### COMPOSITION

04.10	FLOOR CONSTRUCTION
04.12	PROTECTIVE CONCRETE SCREED MIN. 50 MM (04.13) CEMENT SCREED MIN. 30 MM
08.20	PE MEMBRANE
08.10	SEPARATION FABRIC - NON WOVEN GEOTEXTILE
<b>05.00</b>	<b>WATERPROFING MEMBRANE FATRAFOL - H</b>
08.10	SEPARATION FABRIC - NON WOVEN GEOTEXTILE
04.11	REINFORCED CONCRETE BASE
01.20	SOIL

##### ACCESSORIES

06.11	LIQUID WATERPROOFING INSULATION
06.20	BITUMINOUS WATERPROOFING LAYER
09.11	HOT AIR WELD
10.10	MECHANICAL FASTENER
10.40	STRIP OF PLASTIC COATED SHEET METAL FATRANYL



#### LEGEND

##### COMPOSITION

04.10	FLOOR CONSTRUCTION
04.12	PROTECTIVE CONCRETE SCREED MIN. 50 MM (04.13) CEMENT SCREED MIN. 30 MM
08.20	PE MEMBRANE
08.10	SEPARATION FABRIC - NON WOVEN GEOTEXTILE
<b>05.00</b>	<b>WATERPROFING MEMBRANE FATRAFOL - H</b>
08.10	SEPARATION FABRIC - NON WOVEN GEOTEXTILE
04.11	REINFORCED CONCRETE BASE
01.20	SOIL

##### ACCESSORIES

05.32	MEMBRANE EKOPLAST 806
06.20	BITUMINOUS WATERPROOFING LAYER
09.17	HEATED SURFACE OF BITUMINOUS SHEET
10.11	MECHANICAL FASTENER WITH PLATE

Fatrafol membrane and bituminous membrane joint by EKOPLAST 806 agaist ground moisture

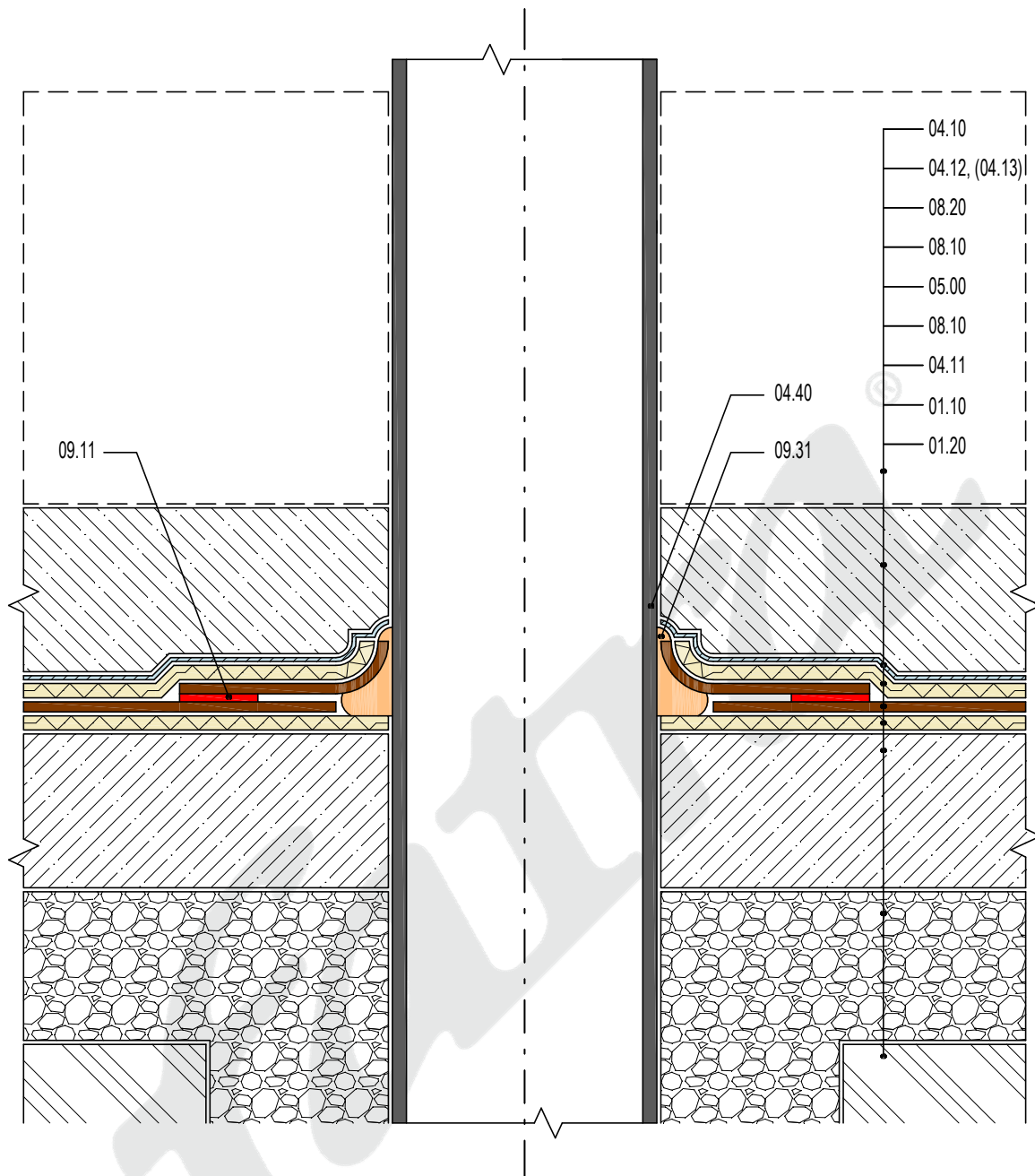
DATE

5/2015

**fatra**

Fatra, a.s., třída Tomáše Bati 1541, 763 61 Napajedla, Czech republic  
tel. +420 577 501 111, fax. +420 577 502 555, e-mail: info@fatrafol.cz, www.fatrafol.cz, www.fatra.cz

**DETAIL 306 H**



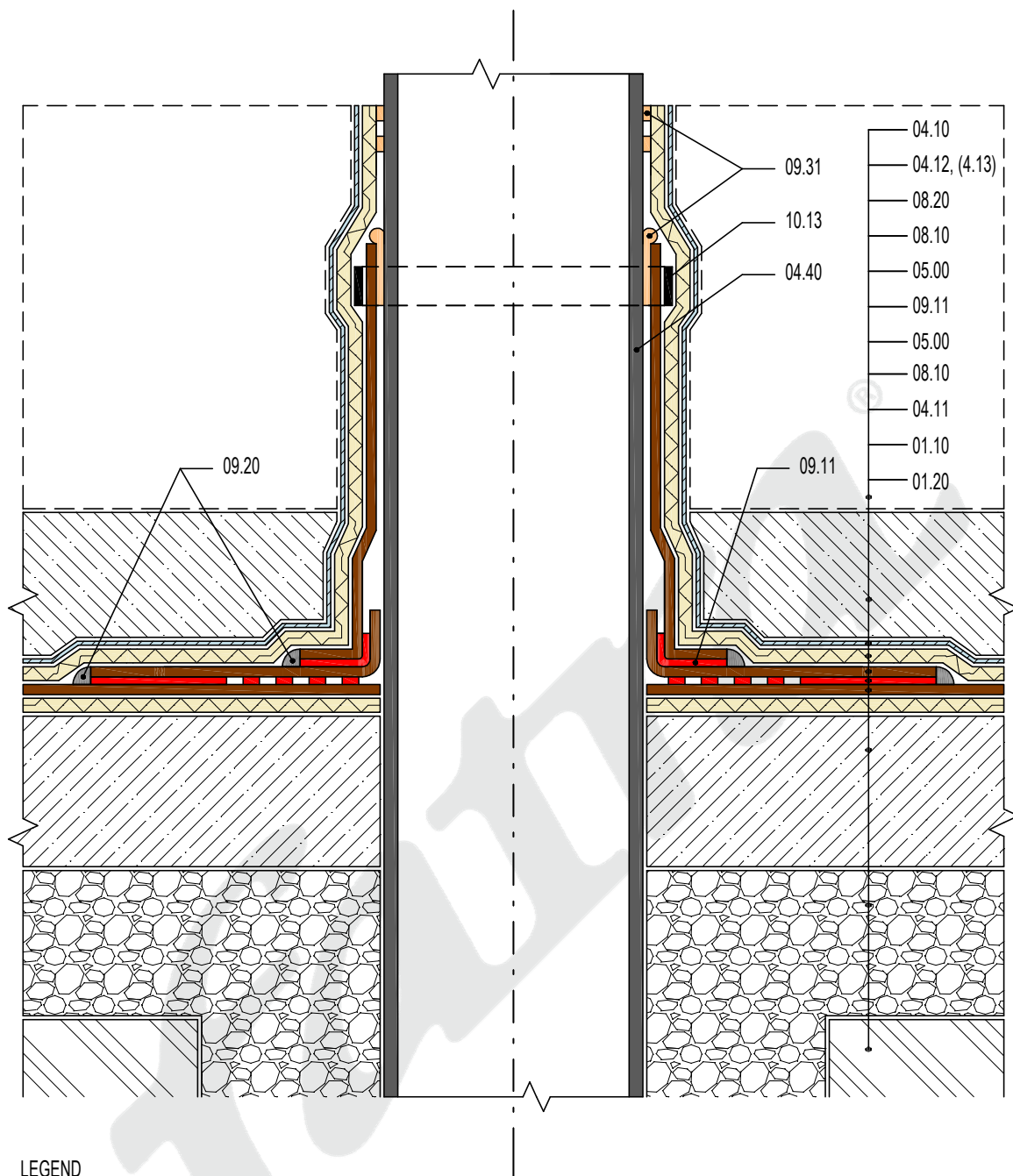
#### LEGEND

##### COMPOSITION

04.10	FLOOR STRUCTURE
04.12	PROTECTIVE CONCRETE SCREED MIN. 50 MM (04.13) CEMENT SCREED MIN. 30 MM
08.20	PE MEMBRANE
08.10	SEPARATION FABRIC - NON WOVEN GEOTEXTILE
05.00	WATERPROFING MEMBRANE FATRAFOL - H
08.10	SEPARATION FABRIC - NON WOVEN GEOTEXTILE
04.11	REINFORCED CONCRETE BASE
01.10	MINE STONE
01.20	SOIL

##### ACCESSORIES

04.40	OBJECT PENETRATING WATERPROOFING MEMBRANE
09.11	HOT AIR WELD
09.31	PU SEALANT



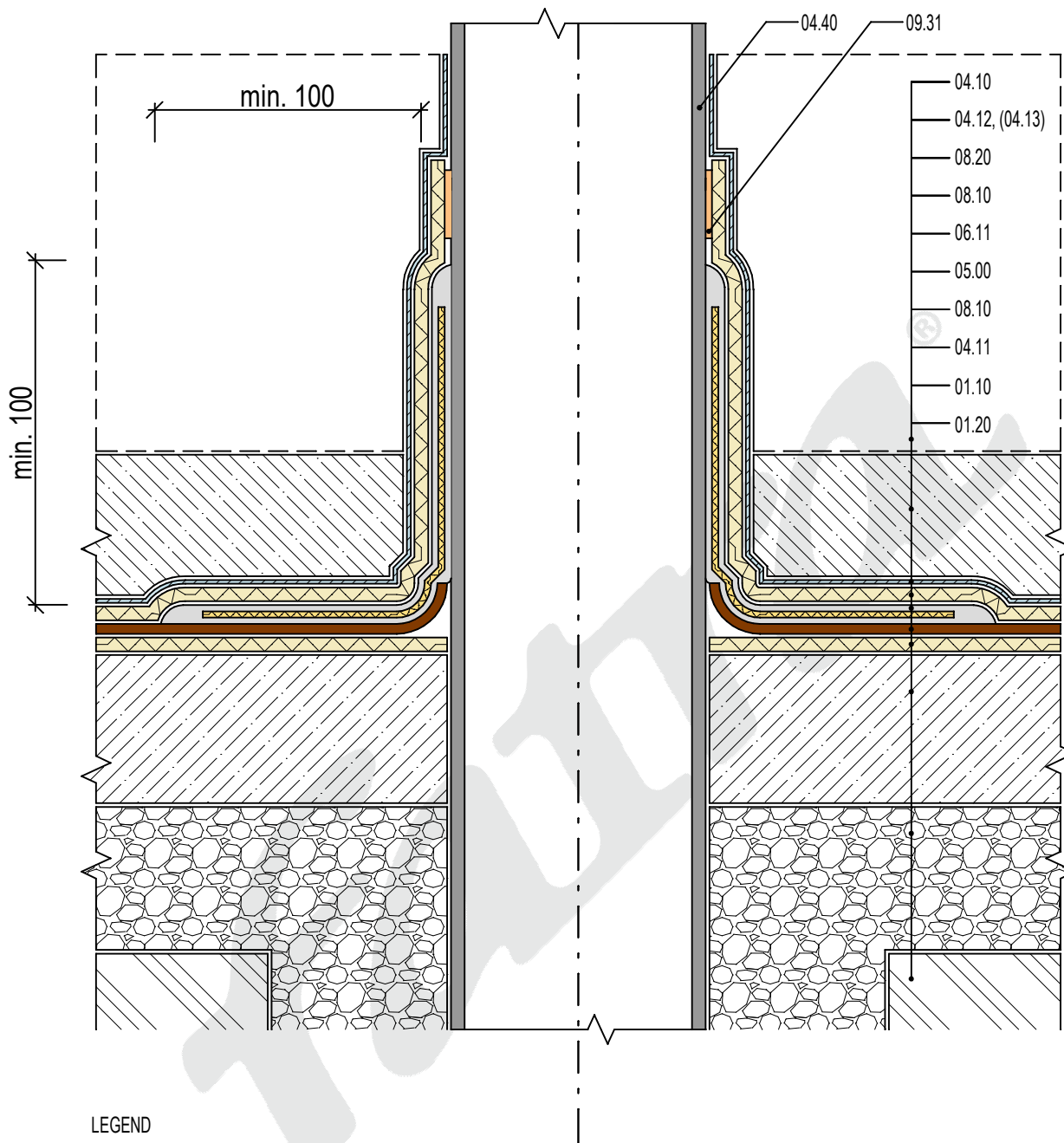
#### LEGEND

##### COMPOSITION

04.10	FLOOR CONSTRUCTION
04.12	PROTECTIVE CONCRETE SCREED MIN. 50 MM (04.13) CEMENT SCREED MIN. 30 MM
08.20	PE MEMBRANE
08.10	SEPARATION FABRIC - NON WOVEN GEOTEXTILE
05.00	WATERPROFING MEMBRANE FATRAFOL H
09.11	HOT AIR WELD
05.00	WATERPROFING MEMBRANE FATRAFOL H
08.10	SEPARATION FABRIC - NON WOVEN GEOTEXTILE
04.11	REINFORCED CONCRETE BASE
01.10	MINE STONE
01.20	SOIL

##### ACCESSORIES

04.40	OBJECT PENETRATING WATERPROOFING MEMBRANE
09.11	HOT AIR WELD
09.20	SEALING COMPOUND
09.31	PU SEALANT
10.13	STAINLESS STEEL WORM GEAR CLAMP



LEGEND

COMPOSITION

- 04.10 FLOOR CONSTRUCTION
- 04.12 PROTECTIVE CONCRETE SCREED MIN. 50 MM  
(04.13) CEMENT SCREED MIN. 30 MM
- 08.20 PE MEMBRANE
- 08.10 SEPARATION FABRIC - NON WOVEN GEOTEXTILE
- 06.11 LIQUID WATER PROOFING INSULATION
- 05.00 WATERPROFING MEMBRANE FATRAFOL H
- 08.10 SEPARATION FABRIC - NON WOVEN GEOTEXTILE
- 04.11 REINFORCED CONCRETE BASE
- 01.10 MINE STONE
- 01.20 SOIL

ACCESSORIES

- 04.40 OBJECT PENETRATING WATERPROOFING MEMBRANE
- 09.31 PU SEALANT

Waterproofing pipe penetration with system Triflex against pressure water

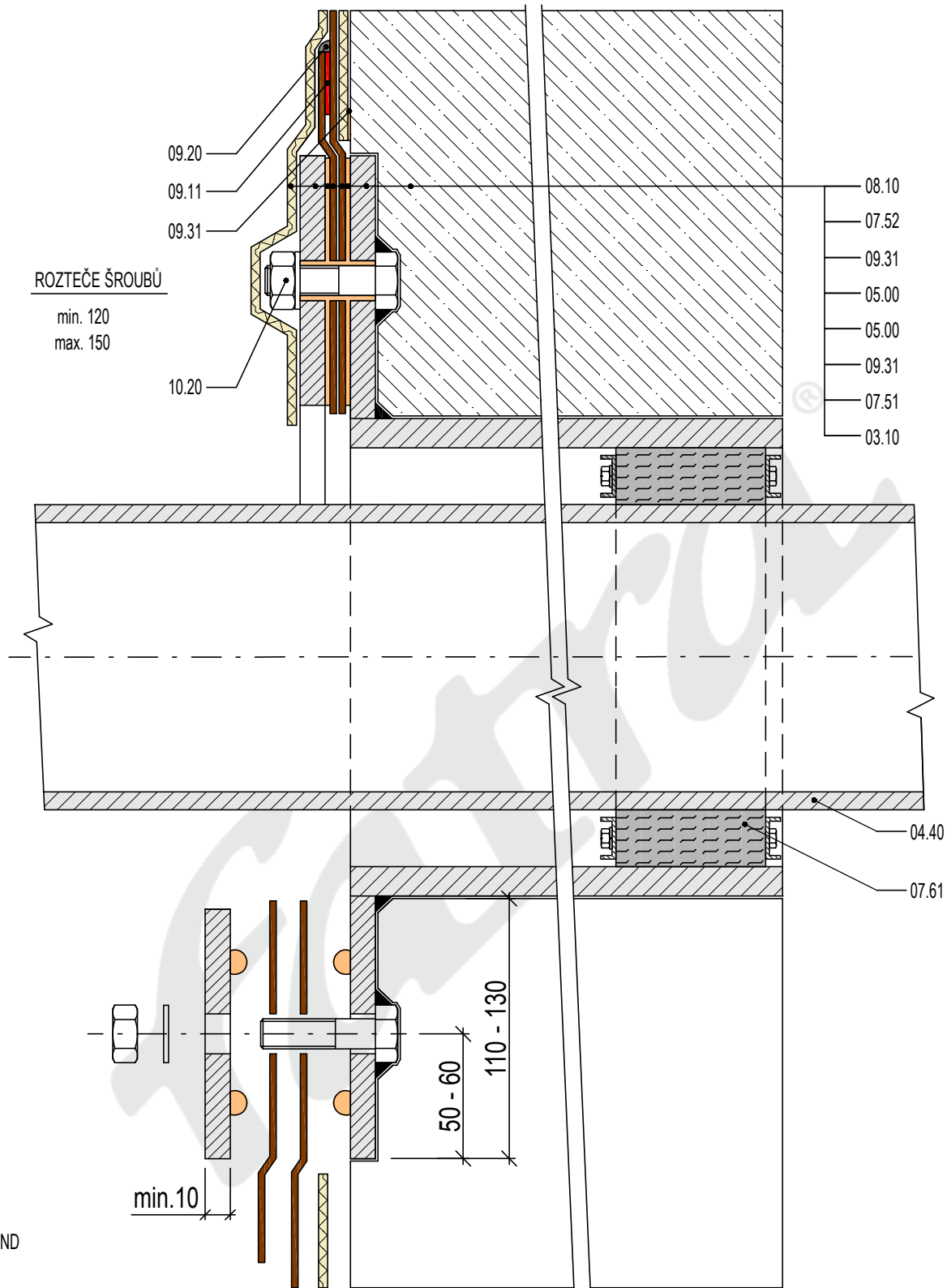
DATE

09/2024



Fatra, a.s., třída Tomáše Bati 1541, 763 61 Napajedla, Czech republic  
tel. +420 577 501 111, fax. +420 577 502 555, e-mail: info@fatrafol.cz, www.fatrafol.cz, www.fatra.cz

**DETAIL 403 H**



LEGEND

COMPOSITION

08.10	SEPARATION FABRIC - NON WOVEN GEOTEXTILE
07.52	LOOSE STEEL FLANGE
09.31	PU SEALANT
05.00	WATERPROFING MEMBRANE FATRAFOL H
05.00	WATERPROFING MEMBRANE FATRAFOL H
09.31	PU SEALANT
07.51	FIXED STEEL FLANGE
03.10	BASEMENT WALL

ACCESSORIES

04.40	OBJECT PENETRATING WATERPROOFING MEMBRANE
07.61	MODULAR (COMPACT) SEAL
09.11	HOT AIR WELD
09.20	SEALING COMPOUND
09.31	PU SEALANT
10.20	JOINT FASTENER

Waterproofing pipe penetration with fixed and loose flange against pressure water

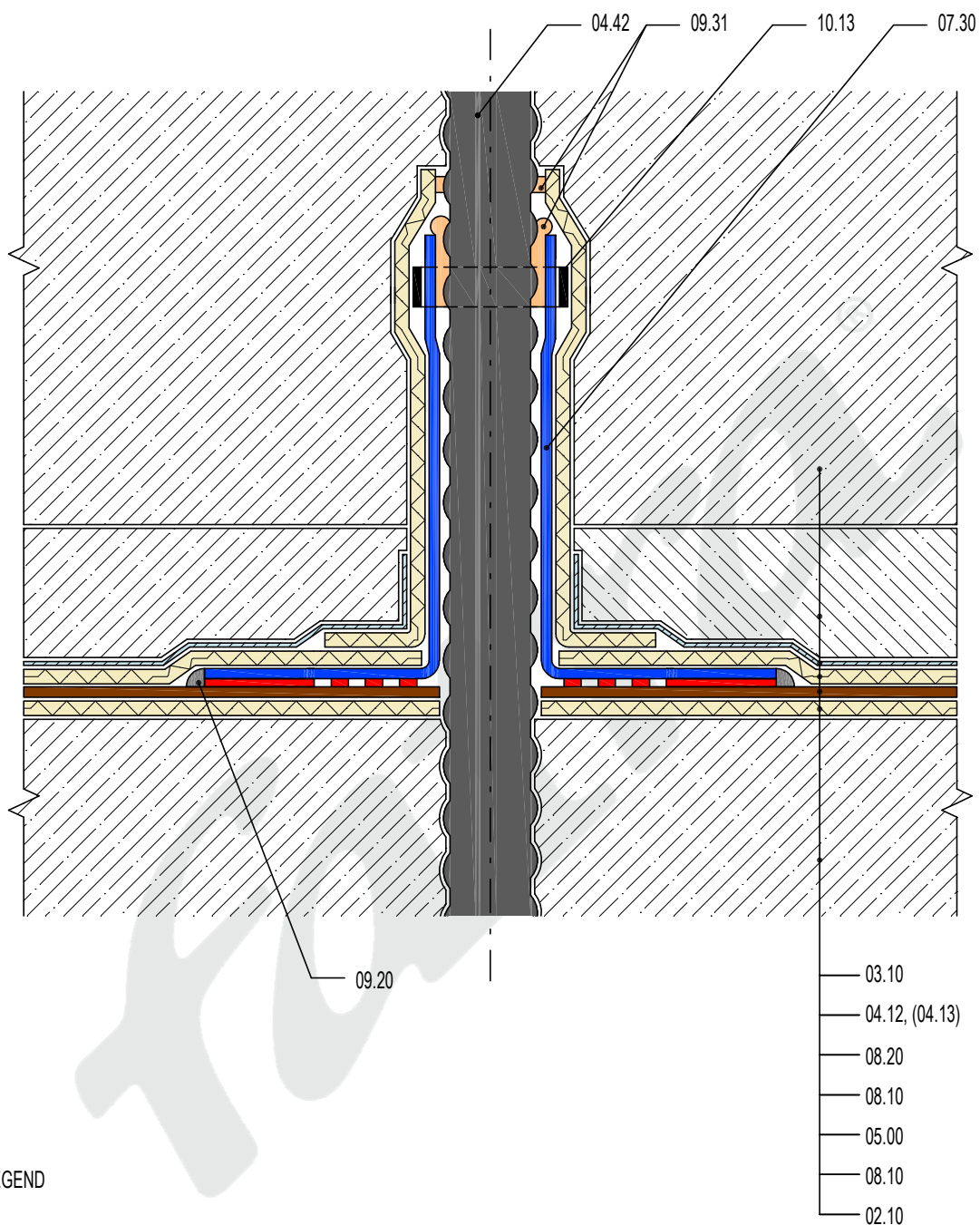
DATE

5/2015

**fatra**

Fatra, a.s., třída Tomáše Bati 1541, 763 61 Napajedla, Czech republic  
tel. +420 577 501 111, fax. +420 577 502 555, e-mail: info@fatrafol.cz, www.fatrafol.cz, www.fatra.cz

**DETAIL 404 H**



#### LEGEND

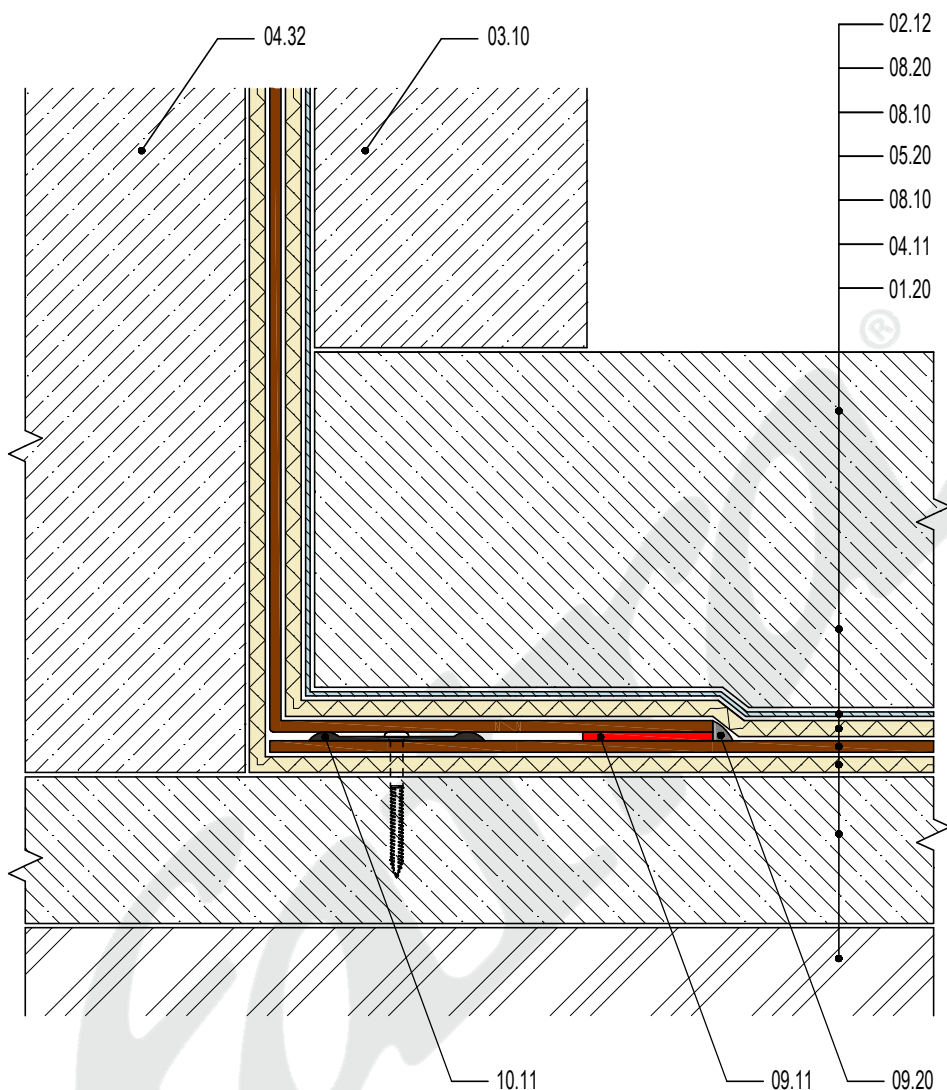
#### COMPOSITION

03.10	BASEMENT WALL
04.12	PROTECTIVE CONCRETE SCREED MIN. 50 MM (04.13) CEMENT SCREED MIN. 30 MM
08.20	PE MEMBRANE
08.10	SEPARATION FABRIC - NON WOVEN GEOTEXTILE
05.00	WATERPROFING MEMBRANE FATRAFOL H
08.10	SEPARATION FABRIC - NON WOVEN GEOTEXTILE
02.10	FOUNDATION CONSTRUCTION

#### ACCESSORIES

04.42	STEEL REINFORCEMENT
07.30	PVC PENETRATION PRE-SHAPED PIECES
09.20	SEALING COMPOUND
09.31	PU SEALANT
10.13	STAINLESS STEEL WORM GEAR CLAMP





#### LEGEND

##### COMPOSITION

02.12	SLAB FOUNDATION
08.20	PE MEMBRAINE
08.10	SEPARATION FABRIC - NON WOVEN GEOTEXTILE
05.20	MEMBRANE AS PROTECTION AGAINST GR. MOISTURE AND RADON
08.10	SEPARATION FABRIC - NON WOVEN GEOTEXTILE
04.11	REINFORCED CONCRETE BASE
01.20	SOIL

##### ACCESSORIES

03.10	BASEMENT WALL
04.32	REINFORCED CONCRETE WALL
09.11	HOT AIR WELD
09.20	SEALING COMPOUND - RECOMENDED
10.11	MECHANICAL FASTENER WITH PLATE

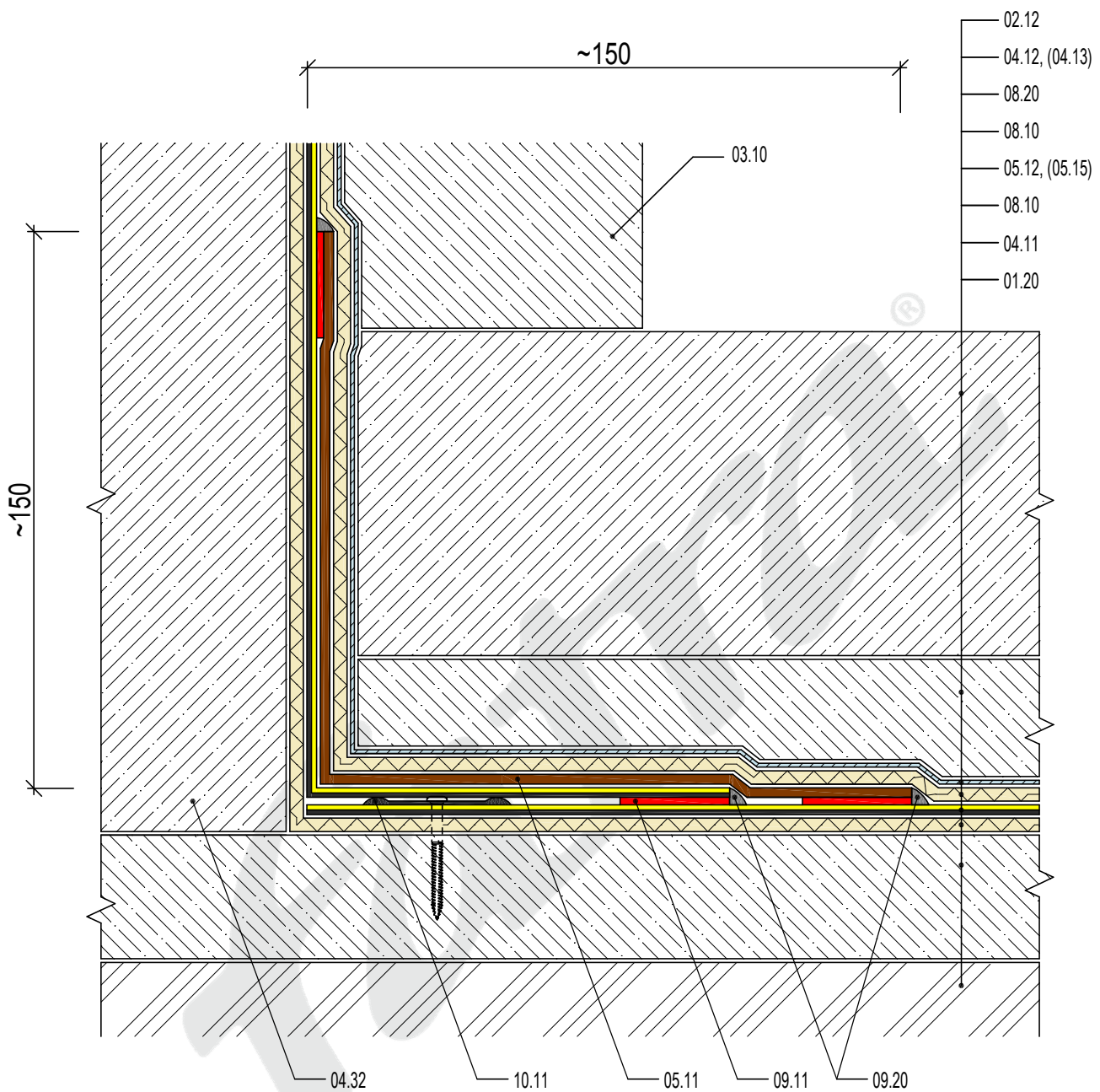
Membrane transition from horizontal to vertical position - against ground moisture

DATE 5/2015



Fatra, a.s., třída Tomáše Bati 1541, 763 61 Napajedla, Czech republic  
tel. +420 577 501 111, fax. +420 577 502 555, e-mail: info@fatrafol.cz, www.fatrafol.cz, www.fatra.cz

**DETAIL 501 H**



LEGEND

COMPOSITION

02.12	FOUNDATION SLAB
04.12	PROTECTIVE CONCRETE SCREED MIN. 50 MM
	(04.13) CEMENT SCREED MIN. 30 MM
08.20	PE MEMBRANE
08.10	SEPARATION FABRIC - NON WOVEN GEOTEXTILE
05.12	MEMBRANE FATRAFOL 803 - SIGNAL
	(05.15) MEMBRANE FATRAFOL 813/VS
08.10	SEPARATION FABRIC - NON WOVEN GEOTEXTILE
04.11	REINFORCED CONCRETE BASE
01.20	SOIL

ACCESSORIES

03.10	BASEMENT WALL
04.32	REINFORCED CONCRETE WALL
05.11	MEMBRANE FATRAFOL 803
09.11	HOT AIR WELD
09.20	SEALING COMPOUND
10.11	MECHANICAL FASTENER WITH PLATE

Membrane transition from horizontal to vertical position - against pressure water

DATE

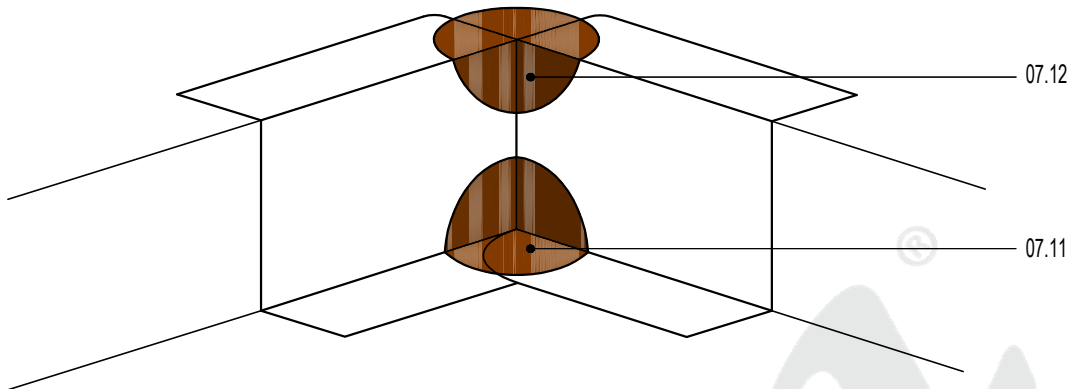
5/2015

**fatra**

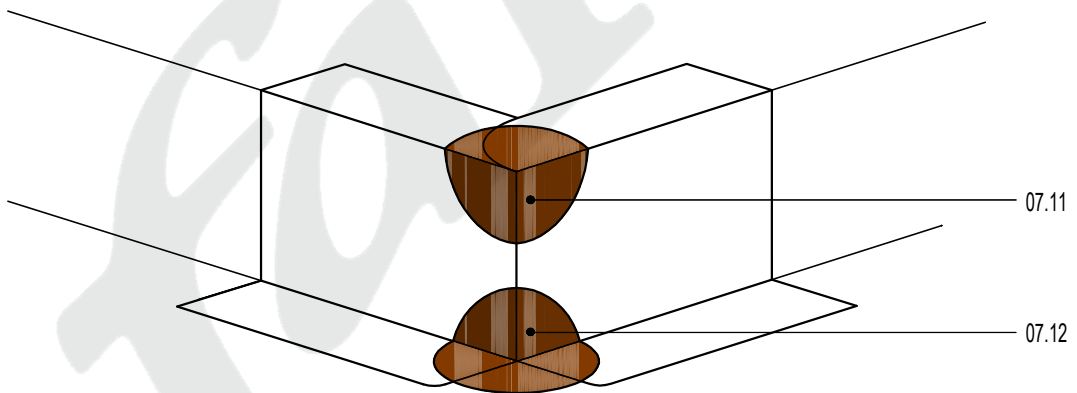
Fatra, a.s., třída Tomáše Bati 1541, 763 61 Napajedla, Czech republic  
tel. +420 577 501 111, fax. +420 577 502 555, e-mail: info@fatrafol.cz, www.fatrafol.cz, www.fatra.cz

**DETAIL 502 H**

INSULATION OF INTERNAL CORNER



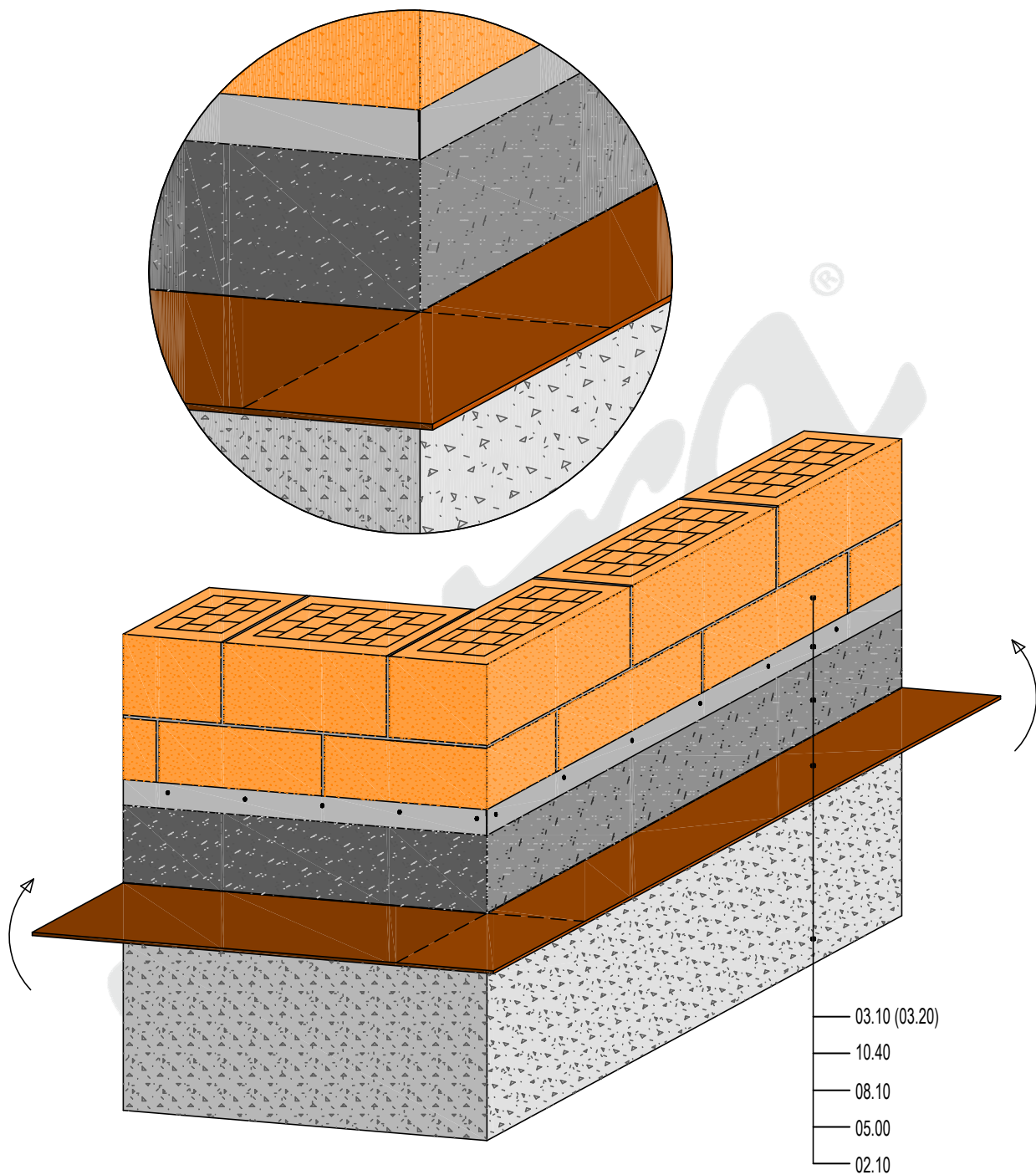
INSULATION OF EXTERNAL CORNER



LEGEND

ACCESSORIES

- 07.11 PRE-SHAPED PIECE - CONE NO. 10
- 07.12 PRE-SHAPED PIECE - WAVE NO. 11

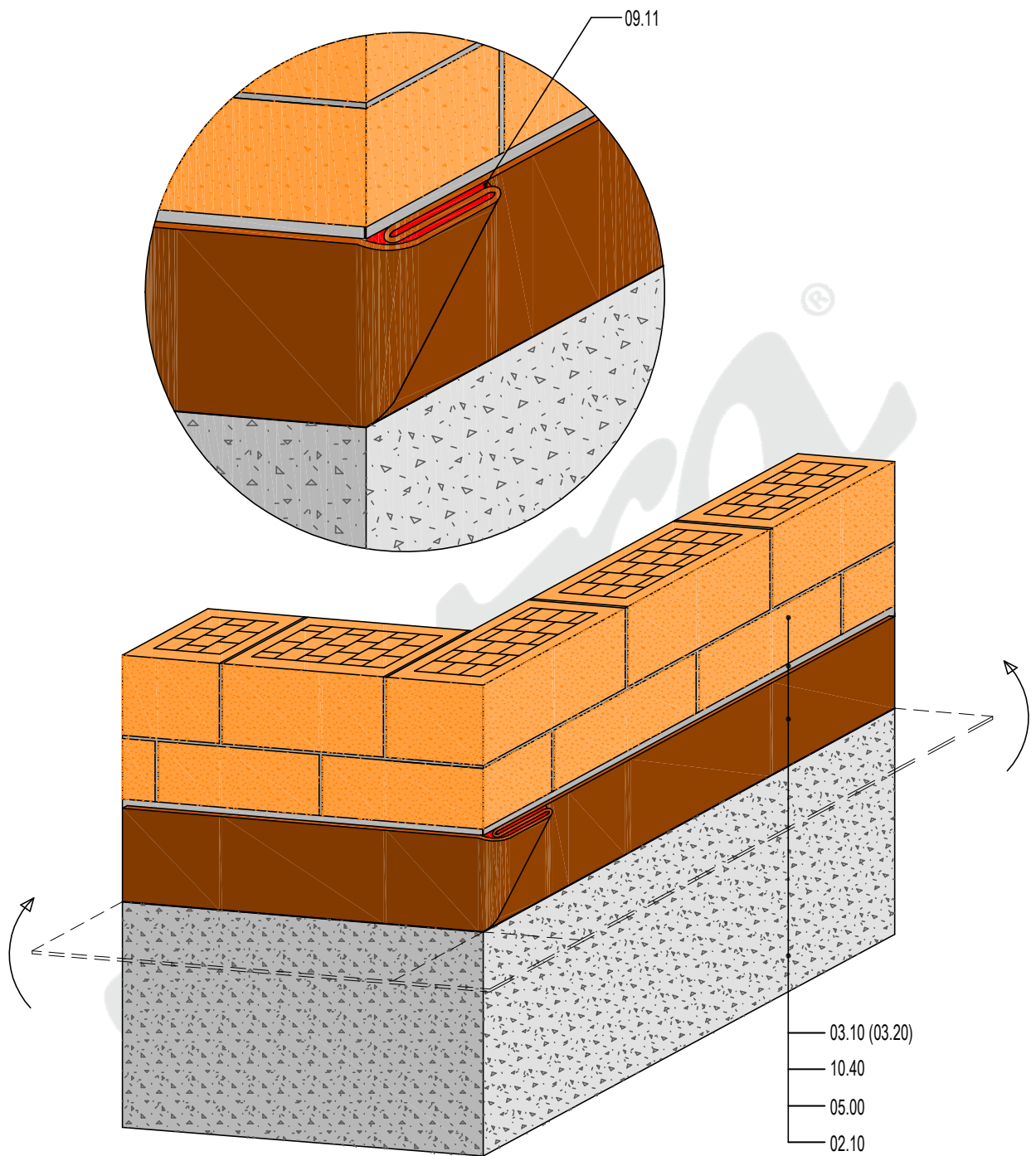


LEGEND

COMPOSITION

- 03.10 BASEMENT WALL  
(03.20) TOPSIDE WALL
- 10.40 STRIP OF PLASTIC COATED SHEET METAL FATRANYL
- 08.10 SEPARATION FABRIC - NON WOVEN GEOTEXTILE
- 05.00 WATERPROFING MEMBRANE FATRAFOL H
- 02.10 FOUNDATION CONSTRUCTION

- 03.10 (03.20)
- 10.40
- 08.10
- 05.00
- 02.10



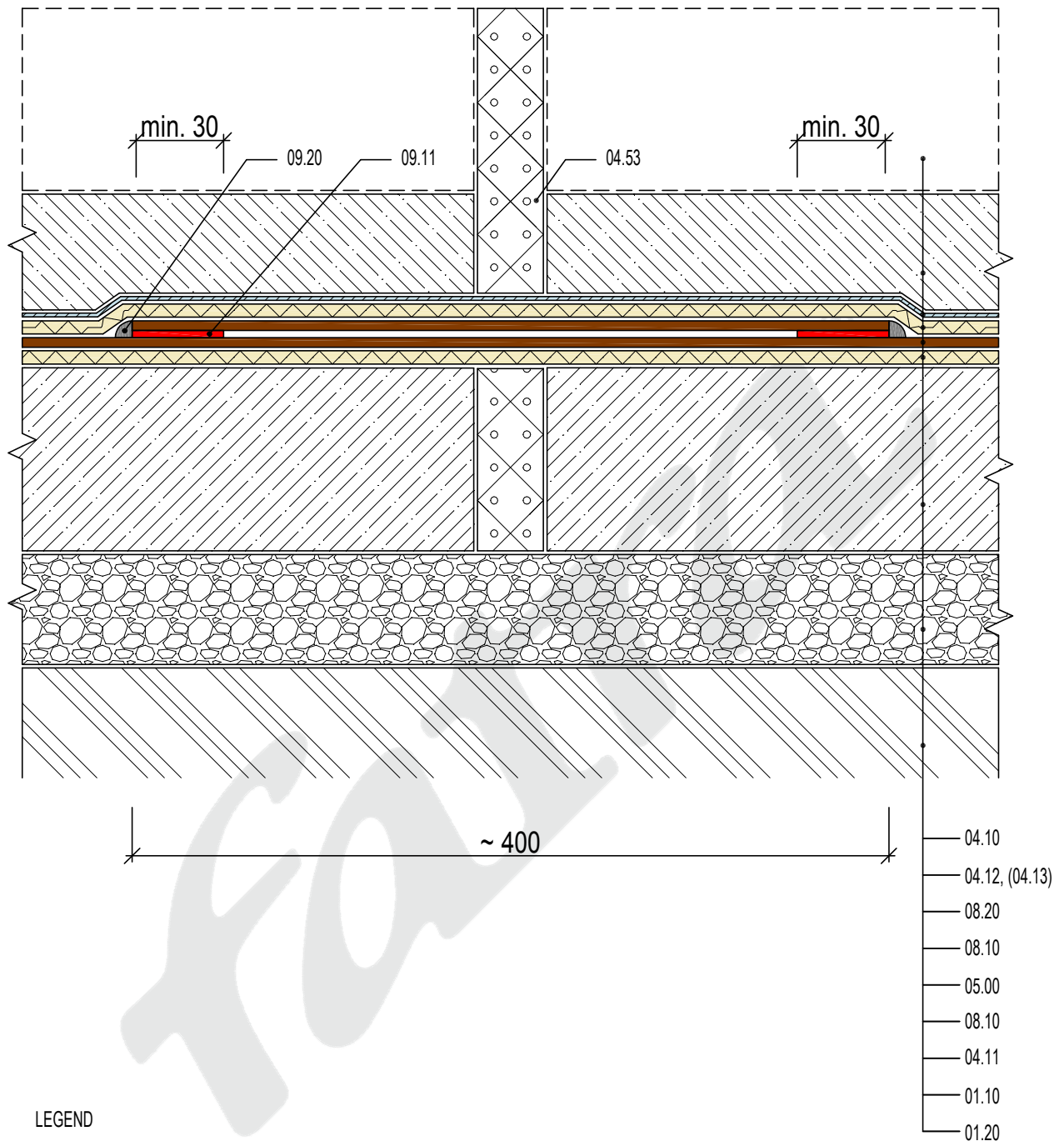
LEGEND

COMPOSITION

- 03.10 BASEMENT WALL
- (03.20) TOPSIDE WALL
- 10.40 STRIP OF PLASTIC COATED SHEET METAL FATRANYL
- 05.00 WATERPROFING MEMBRANE FATRAFOL H
- 02.10 FOUNDATION CONSTRUCTION

ACCESSORIES

- 09.11 HOT AIR WELD



#### LEGEND

#### COMPOSITION

04.10	FLOOR CONSTRUCTION
04.12	PROTECTIVE CONCRETE SCREED MIN. 50 MM (04.13) CEMENT SCREED MIN. 30 MM
08.20	PE MEMBRANE
08.10	SEPARATION FABRIC - NON WOVEN GEOTEXTILE
05.00	WATERPROFING MEMBRANE FATRAFOL H
08.10	SEPARATION FABRIC - NON WOVEN GEOTEXTILE
04.11	ARMED CONCRETE
01.10	MINE STONE
01.20	SOIL

#### ACCESSORIES

04.53	DILATATION GAP FILLING
09.11	HOT AIR WELD
09.20	SEALING COMPOUND

Solution for dilatation gap with possible movement up to 10 mm- Alternative 1.

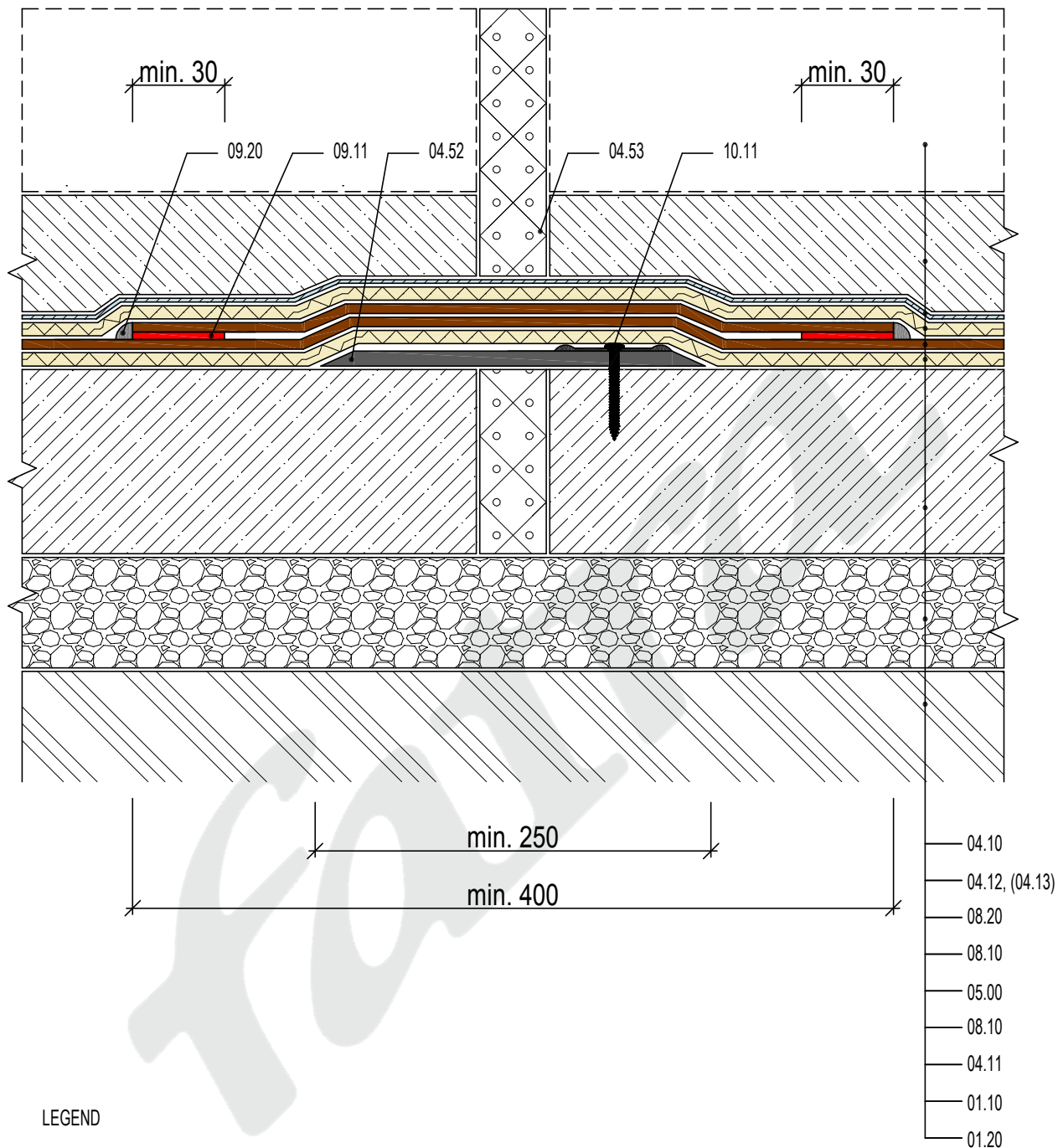
DATE

3/2015

**fatra**

Fatra, a.s., třída Tomáše Bati 1541, 763 61 Napajedla, Czech republic  
tel. +420 577 501 111, fax. +420 577 502 555, e-mail: info@fatrafol.cz, www.fatrafol.cz, www.fatra.cz

**DETAIL 601 H**



LEGEND

COMPOSITION

- 04.10 FLOOR CONSTRUCTION
- 04.12 PROTECTIVE CONCRETE SCREED MIN. 50 MM  
(04.13) CEMENT SCREED MIN. 30 MM
- 08.20 PE MEMBRANE
- 08.10 SEPARATION FABRIC - NON WOVEN GEOTEXTILE
- 05.00 WATERPROFING MEMBRANE FATRAFOL H
- 08.10 SEPARATION FABRIC - NON WOVEN GEOTEXTILE
- 04.11 REINFORCED CONCRETE BASE
- 01.10 MINE STONE
- 01.20 SOIL

ACCESSORIES

- 04.52 PE BOARD
- 04.53 DILATATION GAP FILLING
- 09.11 HOT AIR WELD
- 09.20 SEALING COMPOUND
- 10.11 MECHANICAL FASTENER WITH PLATE

Solution for dilatation gap with possible movement up to 10 mm- Alternative 2.

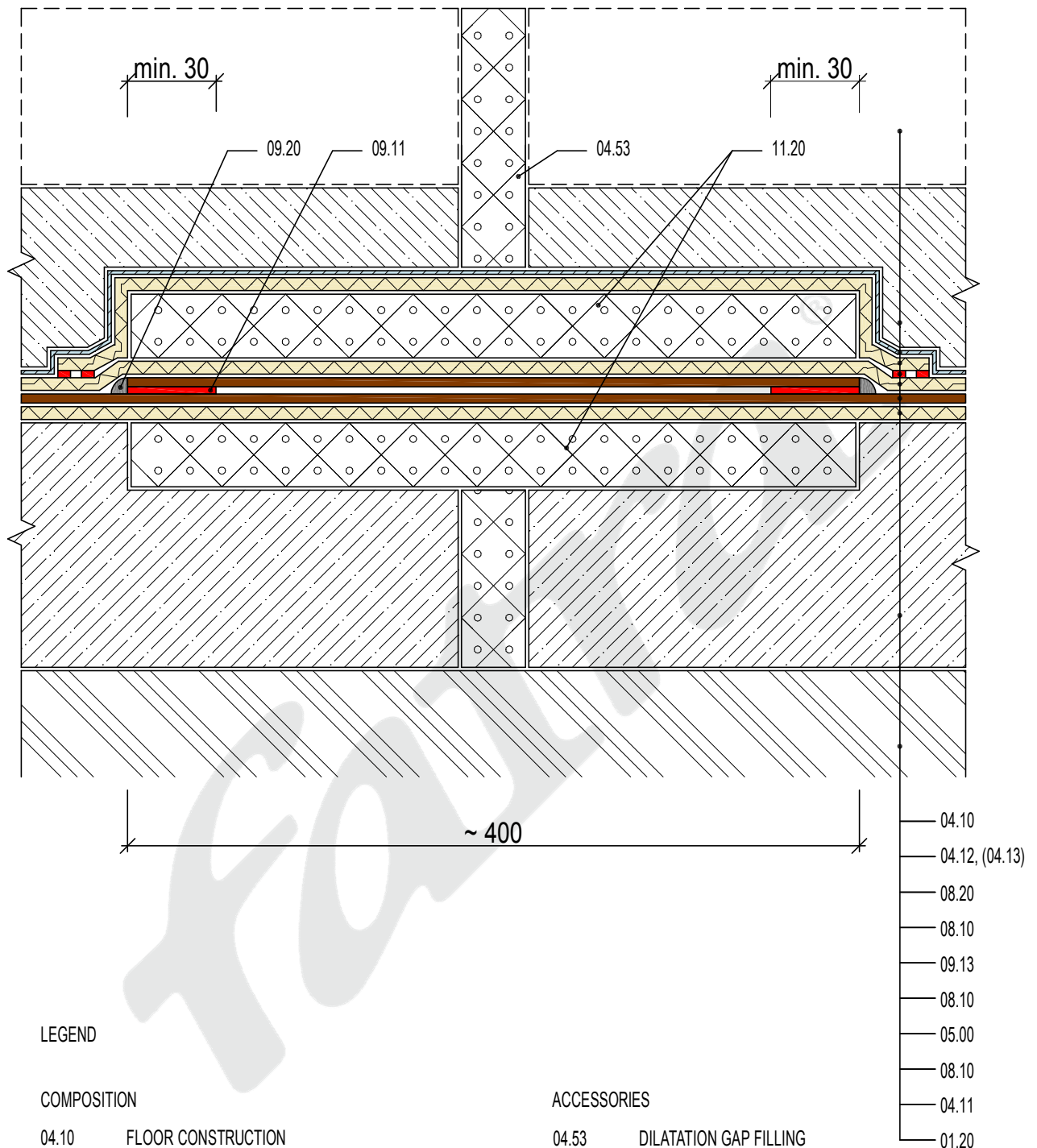
DATE

03/2015



Fatra, a.s., třída Tomáše Bati 1541, 763 61 Napajedla, Czech republic  
tel. +420 577 501 111, fax. +420 577 502 555, e-mail: info@fatrafol.cz, www.fatrafol.cz, www.fatra.cz

**DETAIL 602 H**



LEGEND

COMPOSITION

- 04.10 FLOOR CONSTRUCTION
- 04.12 PROTECTIVE CONCRETE SCREED MIN. 50 MM  
(04.13) CEMENT SCREED MIN. 30 MM
- 08.20 PE MEMBRANE
- 08.10 SEPARATION FABRIC - NON WOVEN GEOTEXTILE
- 09.13 POINT HOT AIR WELD
- 08.10 SEPARATION FABRIC - NON WOVEN GEOTEXTILE
- 05.00 WATERPROFING MEMBRANE FATRAFOL H
- 08.10 SEPARATION FABRIC - NON WOVEN GEOTEXTILE
- 04.11 REINFORCED CONCRETE BASE
- 01.20 SOIL

ACCESSORIES

- 04.53 DILATATION GAP FILLING
- 09.11 HOT AIR WELD
- 09.13 POINT HOT AIR WELD
- 09.20 SEALING COMPOUND
- 11.20 THERMAL INSULATION

- 04.10
- 04.12, (04.13)
- 08.20
- 08.10
- 09.13
- 08.10
- 05.00
- 08.10
- 04.11
- 01.20

Solution for dilatation gap with possible movement above 10 mm

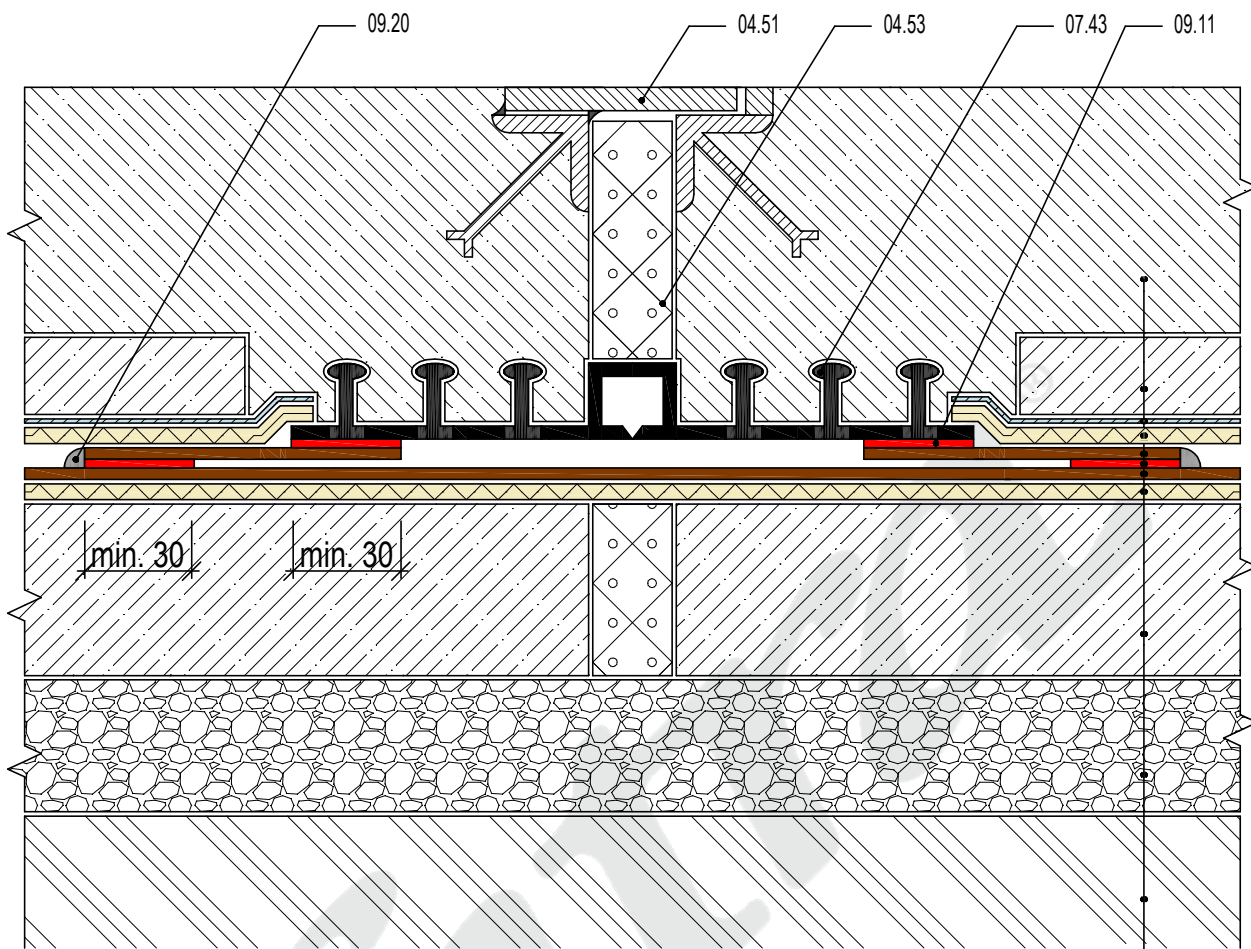
DATE 3/2015



Fatra, a.s., třída Tomáše Bati 1541, 763 61 Napajedla, Czech republic  
tel. +420 577 501 111, fax. +420 577 502 555, e-mail: info@fatrafol.cz, www.fatrafol.cz, www.fatra.cz

DETAIL 603 H





- 02.12
- 04.12, (04.13)
- 08.20
- 08.10
- 05.00
- 09.11
- 05.00
- 08.10
- 04.11
- 01.10
- 01.20

LEGEND

COMPOSITION

- 02.12 SLAB FOUNDATION
- 04.12 PROTECTIVE CONCRETE SCREED MIN. 50 MM  
(04.13) CEMENT SCREED MIN. 30 MM
- 08.20 PE MEMBRANE
- 08.10 SEPARATION FABRIC - NON WOVEN GEOTEXTILE
- 05.00 WATERPROFING MEMBRANE FATRAFOL H
- 09.11 HOT AIR WELD
- 05.00 WATERPROFING MEMBRANE FATRAFOL H
- 08.10 SEPARATION FABRIC - NON WOVEN GEOTEXTILE
- 04.11 REINFORCED CONCRETE BASE
- 01.10 MINE STONE
- 01.20 SOIL

ACCESSORIES

- 04.51 DILATATION PROFILE IN FLOOR
- 04.53 DILATATION GAP FILLING
- 07.43 SURFACE PVC DILATATION WATER BAR
- 09.11 HOT AIR WELD
- 09.20 SEALING COMPOUND

Solution for dilatation gap by inserted water bar

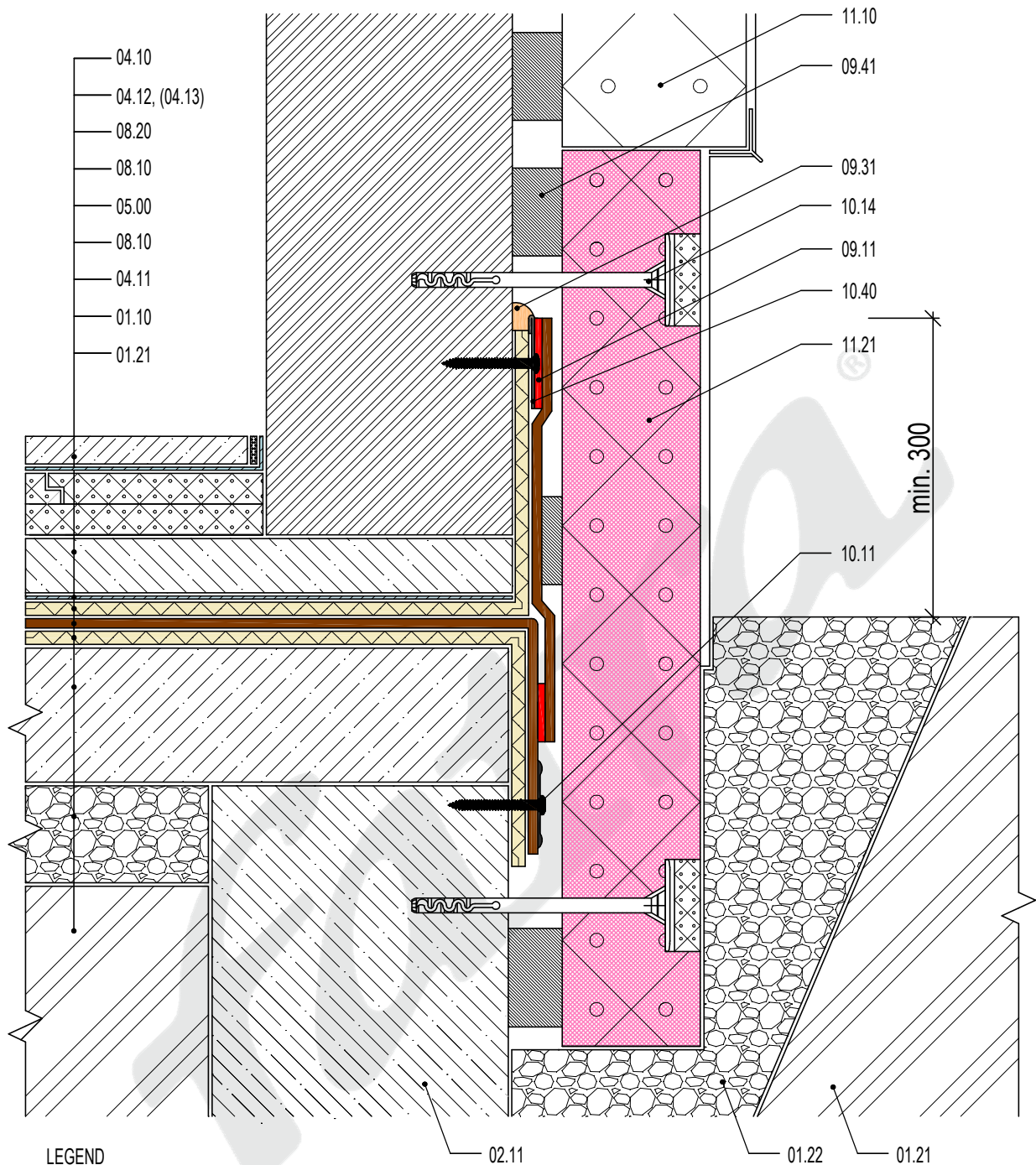
DATE

3/2015



Fatra, a.s., třída Tomáše Bati 1541, 763 61 Napajedla, Česká republika  
tel. +420 577 501 111, fax. +420 577 502 555, e-mail: info@fatrafol.cz, www.fatrafol.cz, www.fatra.cz

DETAIL 604 H



#### LEGEND

#### COMPOSITION

04.10	FLOOR CONSTRUCTION
04.12	PROTECTIVE CONCRETE SCREED MIN. 50 MM (04.13) CEMENT SCREED MIN. 30 MM
08.20	PE MEMBRANE
08.10	SEPARATION FABRIC - NON WOVEN GEOTEXTILE
05.00	WATERPROFING MEMBRANE FATRAFOL H
08.10	SEPARATION FABRIC - NON WOVEN GEOTEXTILE
04.11	REINFORCED CONCRETE BASE
01.10	MINE STONE
01.21	SOIL

#### ACCESSORIES

01.21	SOIL
01.22	COMPACTED TRENCH BACKFILL
02.11	FOUNDATION WALL (FOOTING)
09.11	HOT AIR WELD
09.31	PU SEALANT
09.41	ADHESIVE FOR SYSTEM ETICS
10.11	MECHANICAL FASTENER WITH PLATE
10.14	ACHOR FOR SYSTEM ETICS
10.40	STRIP OF PLASTIC COATED SHEET METAL FATRANYL
11.10	ETICS
11.21	THERMAL INSULATION XPS

Ending membrane on wall - fastening of thermal insulation off membrane

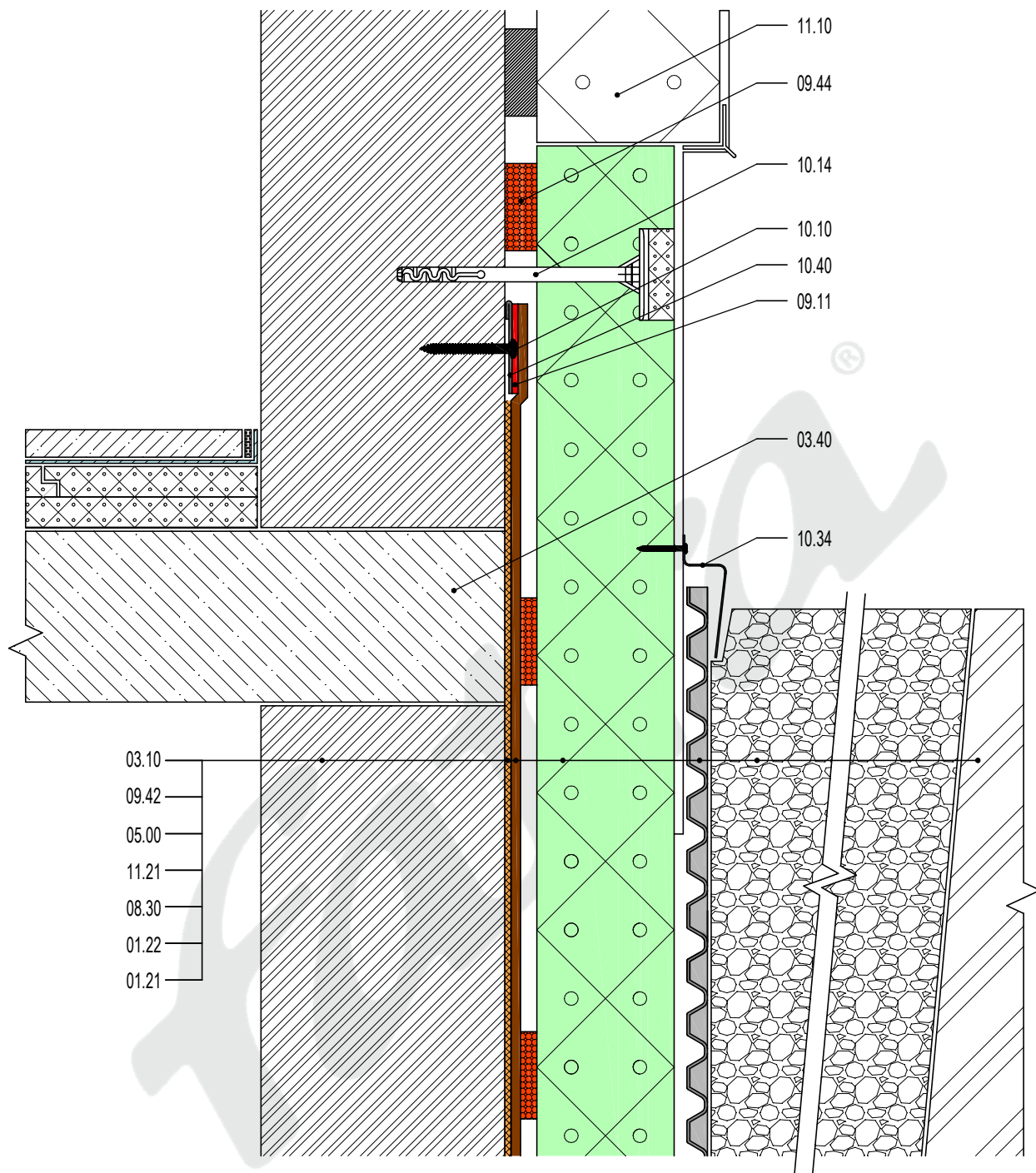
DATE

3/2015

**fatra**

Fatra, a.s., třída Tomáše Bati 1541, 763 61 Napajedla, Czech republic  
tel. +420 577 501 111, fax. +420 577 502 555, e-mail: info@fatrafol.cz, www.fatrafol.cz, www.fatra.cz

**DETAIL 701 H**



LEGEND

COMPOSITION

03.10	BASEMENT WALL
09.42	CONTACT ADHESIVE EMFICOL 34033 A
05.00	WATERPROFING MEMBRANE FATRAFOL H
11.21	THERMAL INSULATION XPS
08.30	DRAINAGE MEMBRANE
01.22	COMPACTED TRENCH BACKFILL
01.21	SOIL

ACCESSORIES

03.40	CEILING SLAB
09.11	HOT AIR WELD
09.44	PU FOAM FOR SYSTEM ETICS
10.10	MECHANICAL FASTENER
10.14	ANCHOR FOR SYSTEM ETICS
10.34	PVC PROFILE FOR DRAINAGE MEMBRANE
10.40	STRIP OF PLASTIC COATED SHEET METAL FATRANYL
11.10	ETICS

Ending membrane on wall - thermal insulation bonded to membrane

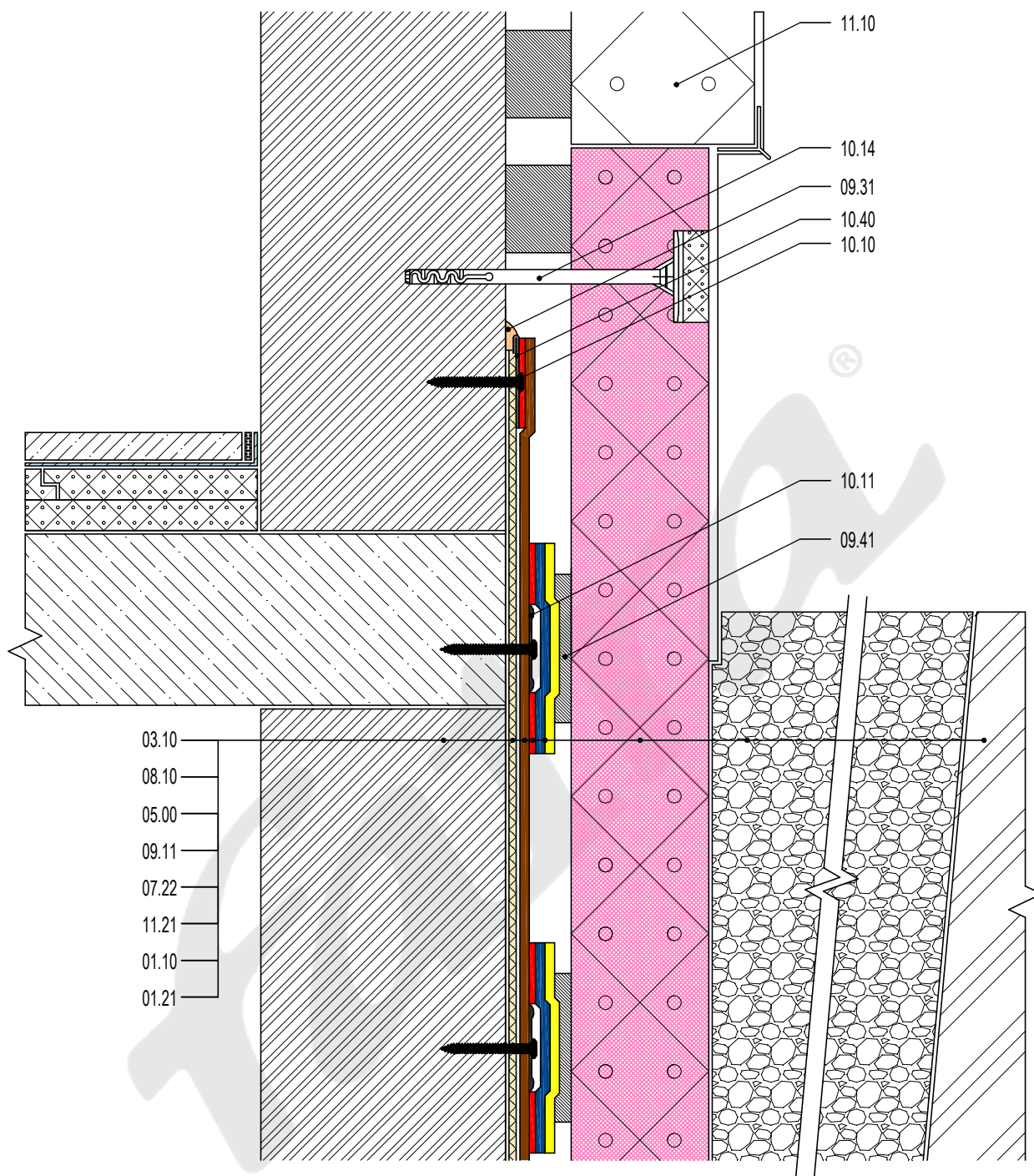
DATE

5/2015

**fatra**

Fatra, a.s., třída Tomáše Bati 1541, 763 61 Napajedla, Czech republic  
tel. +420 577 501 111, fax. +420 577 502 555, e-mail: info@fatrafol.cz, www.fatrafol.cz, www.fatra.cz

**DETAIL 702 H**



#### LEGEND

#### COMPOSITION

03.10	BASEMENT WALL
08.10	SEPARATION FABRIC - NON WOVEN GEOTEXTILE
05.00	WATERPROFING MEMBRANE FATRAFOL H
09.11	HOT AIR WELD
07.22	ROUND PATCH OF FATRAFOL 807
11.21	THERMAL INSULATION XPS
01.22	COMPACTED TRENCH BACKFILL
01.21	SOIL

#### ACCESSORIES

09.31	PU SEALANT
09.41	ADHESIVE FOR SYSTEM ETICS
10.10	MECHANICAL FASTENER
10.11	MECHANICAL FASTENER WITH PLATE
10.14	ANCHOR FOR SYSTEM ETICS
10.40	STRIP PLASTIC COATED SHEET METAL FATRANYL
11.10	ETICS

Ending membrane on wall - thermal insulation bonded to Fatrafol 807 patches

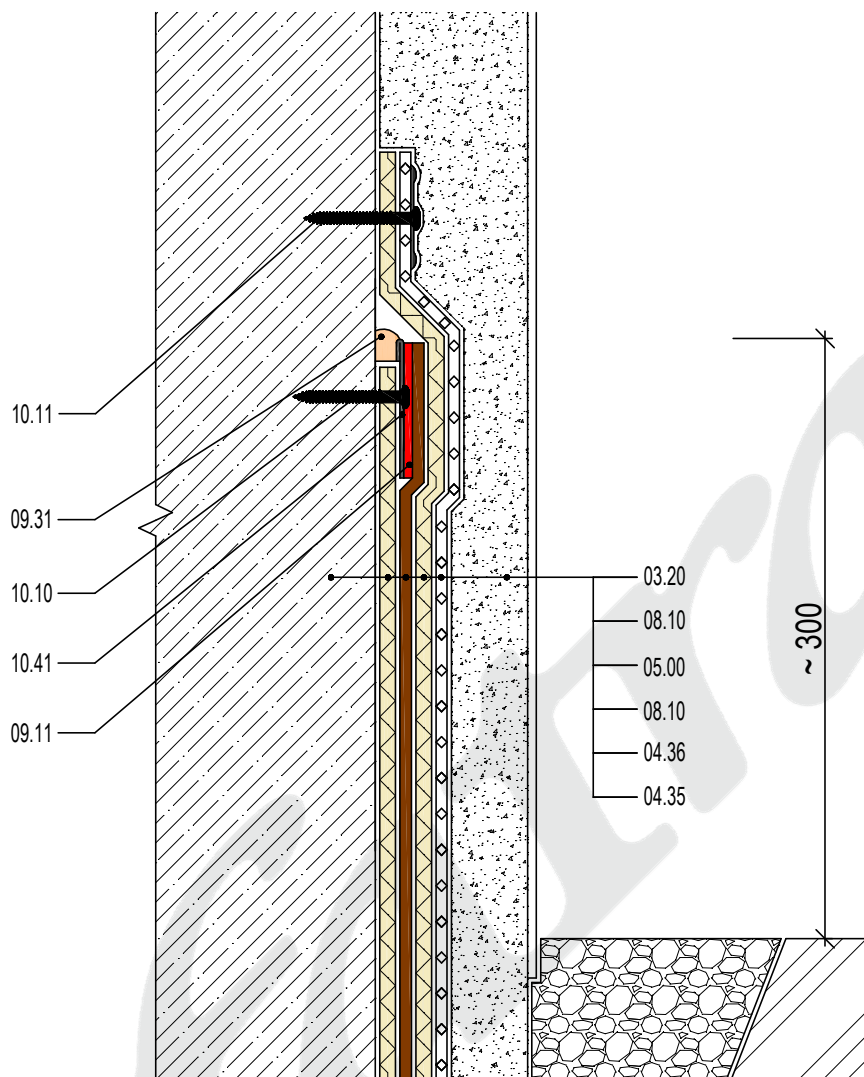
DATE

5/2015

**fatra**

Fatra, a.s., třída Tomáše Bati 1541, 763 61 Napajedla, Czech republic  
tel. +420 577 501 111, fax. +420 577 502 555, e-mail: info@fatrafol.cz, www.fatrafol.cz, www.fatra.cz

**DETAIL 703 H**



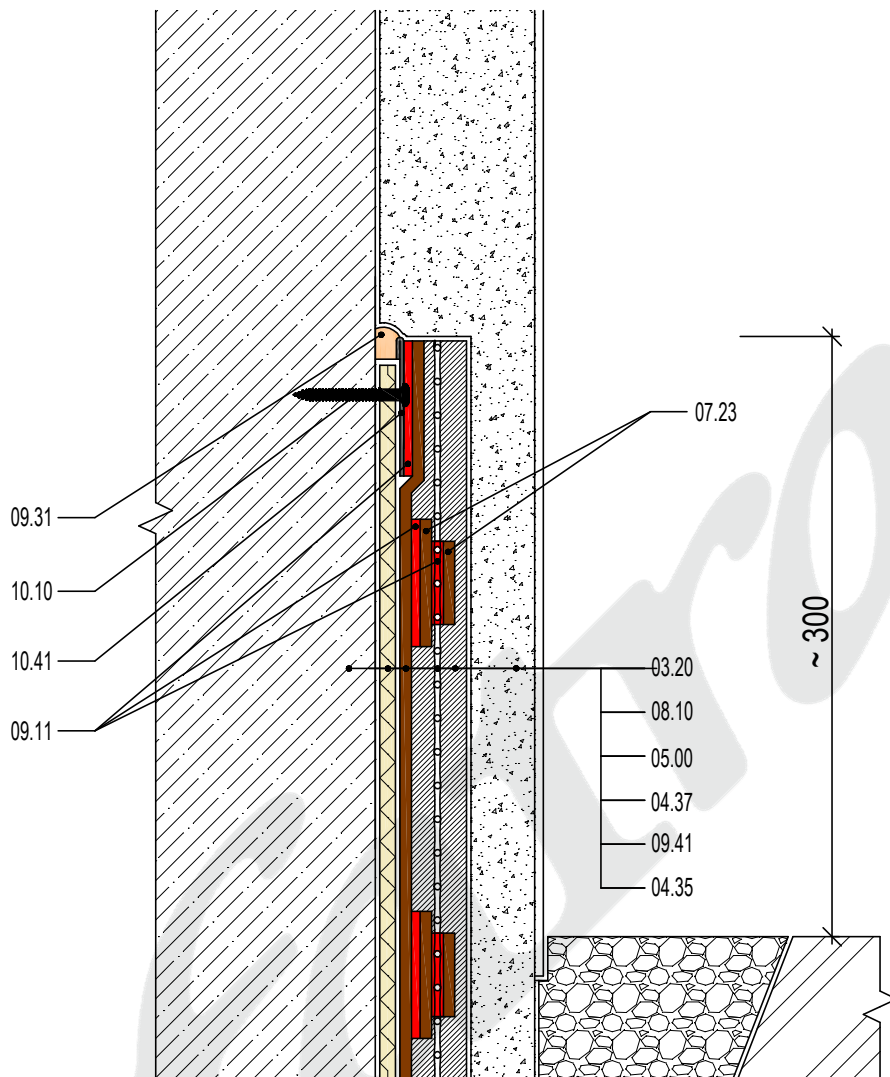
#### LEGEND

##### COMPOSITION

03.20	TOPSIDE WALL
08.10	SEPARATION FABRIC - NON WOVEN GEOTEXTILE
<b>05.00</b>	<b>WATERPROFING MEMBRANE FATRAFOL - H</b>
08.10	SEPARATION FABRIC - NON WOVEN GEOTEXTILE
04.36	MESH WITH CERAMIC
04.35	PLASTER

##### ACCESSORIES

09.11	HOT AIR WELD
09.31	PU SEALANT
10.10	MECHANICAL FASTENER
10.11	MECHANICAL FASTENER WITH PLATE
10.41	STRIP OF PLASTIC COATED SHEET METAL PROFILE FATRANYL



#### LEGEND

##### COMPOSITION

03.20	TOPSIDE WALL
08.10	SEPARATION FABRIC - NON WOVEN GEOTEXTILE
<b>05.00</b>	<b>WATERPROOFING MEMBRANE FATRAFOL - H</b>
04.37	GLASS FIBRE REINFORCEMENT MESH
09.41	ADHESIVE FOR SYSTEM ETICS
04.35	PLASTER

##### ACCESSORIES

07.23	ROUND PATCH OF FATRAFOL
09.11	HOT AIR WELD
09.31	PU SEALANT
10.10	MECHANICAL FASTENER
10.41	STRIP OF PLASTIC COATED SHEET METAL PROFILE FATRANYL

Outside wall finish without ETICS - by glass fibre mesh and Fatrafol patches

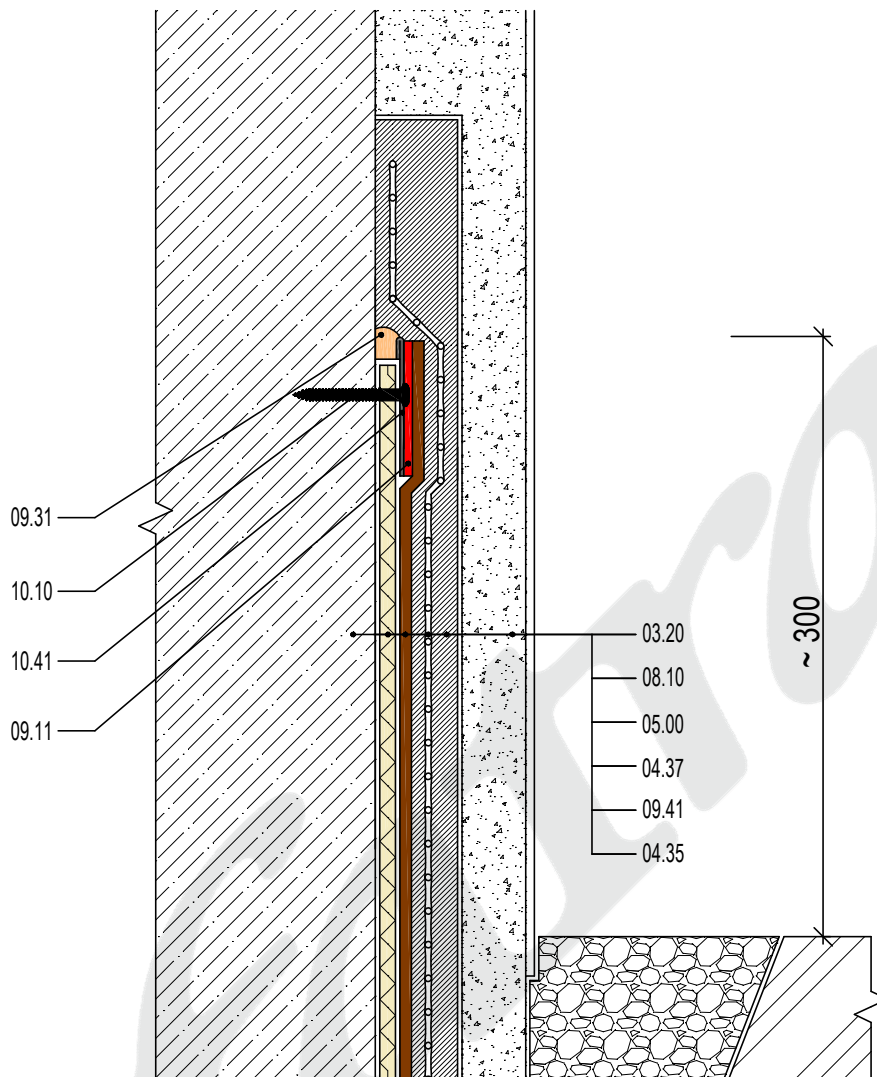
DATE

8/2015

**fatra**

Fatra, a.s., třída Tomáše Bati 1541, 763 61 Napajedla, Czech republic  
tel. +420 577 501 111, fax. +420 577 502 555, e-mail: info@fatrafol.cz, www.fatrafol.cz, www.fatra.cz

**DETAIL 705 H**



#### LEGEND

##### COMPOSITION

03.20	TOPSIDE WALL
08.10	SEPARATION FABRIC - NON WOVEN GEOTEXTILE
<b>05.00</b>	<b>WATERPROFING MEMBRANE FATRAFOL - H</b>
04.37	GLASS FIBRE REINFORCEMENT MESH
09.41	ADHESIVE FOR SYSTEM ETICS
04.35	PLASTER

##### ACCESSORIES

09.11	HOT AIR WELD
09.31	PU SEALANT
10.10	MECHANICAL FASTENER
10.41	STRIP OF PLASTIC COATED SHEET METAL PROFILE FATRANYL

Outside wall finish without ETICS- by glass fibre reinforcement mesh

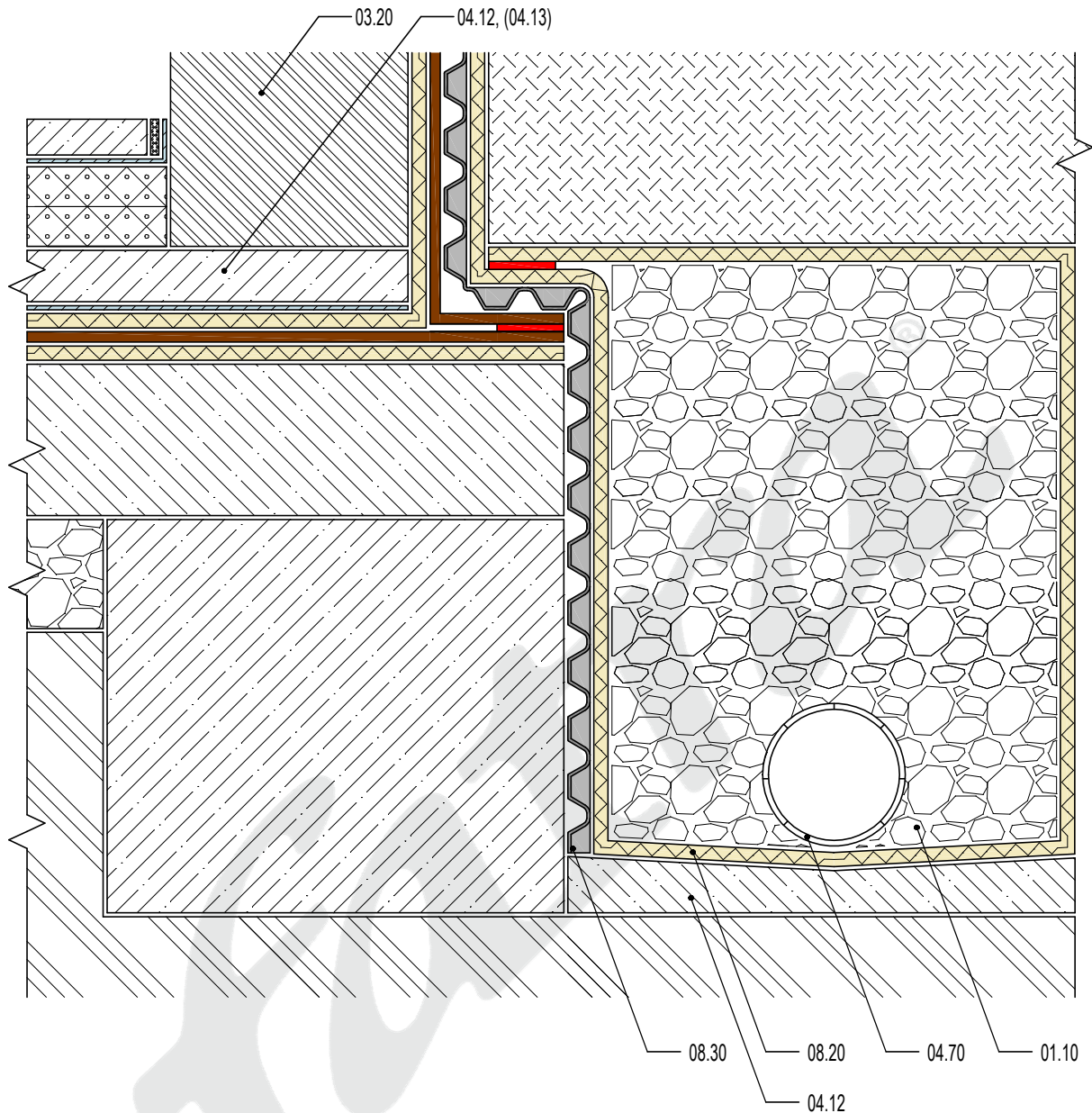
DATE

8/2014

**fatra**

Fatra, a.s., třída Tomáše Bati 1541, 763 61 Napajedla, Czech republic  
tel. +420 577 501 111, fax. +420 577 502 555, e-mail: info@fatrafol.cz, www.fatrafol.cz, www.fatra.cz

**DETAIL 706 H**

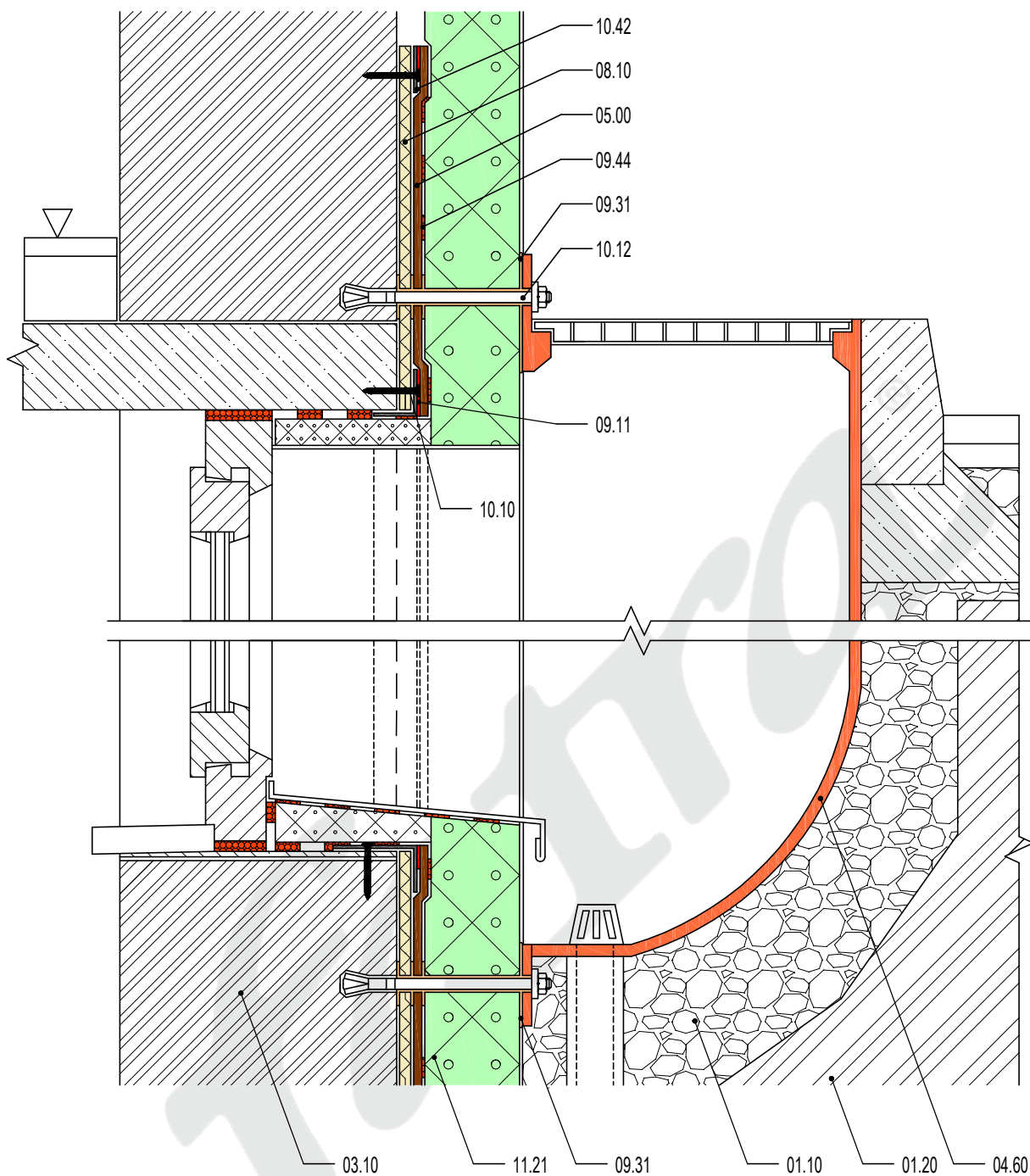


LEGEND

COMPOSITION

- 01.10 MINE STONE
- 03.20 TOPSIDE WALL
- 04.12 PROTECTIVE CONCRETE SCREED MIN. 50 MM  
(04.13) CEMENT SCREED MIN. 30 MM
- 04.70 DRAINAGE PIPE
- 08.10 SEPARATION FABRIC - NON WOVEN GEOTEXTILE
- 08.30 DRAINAGE MEMBRANE

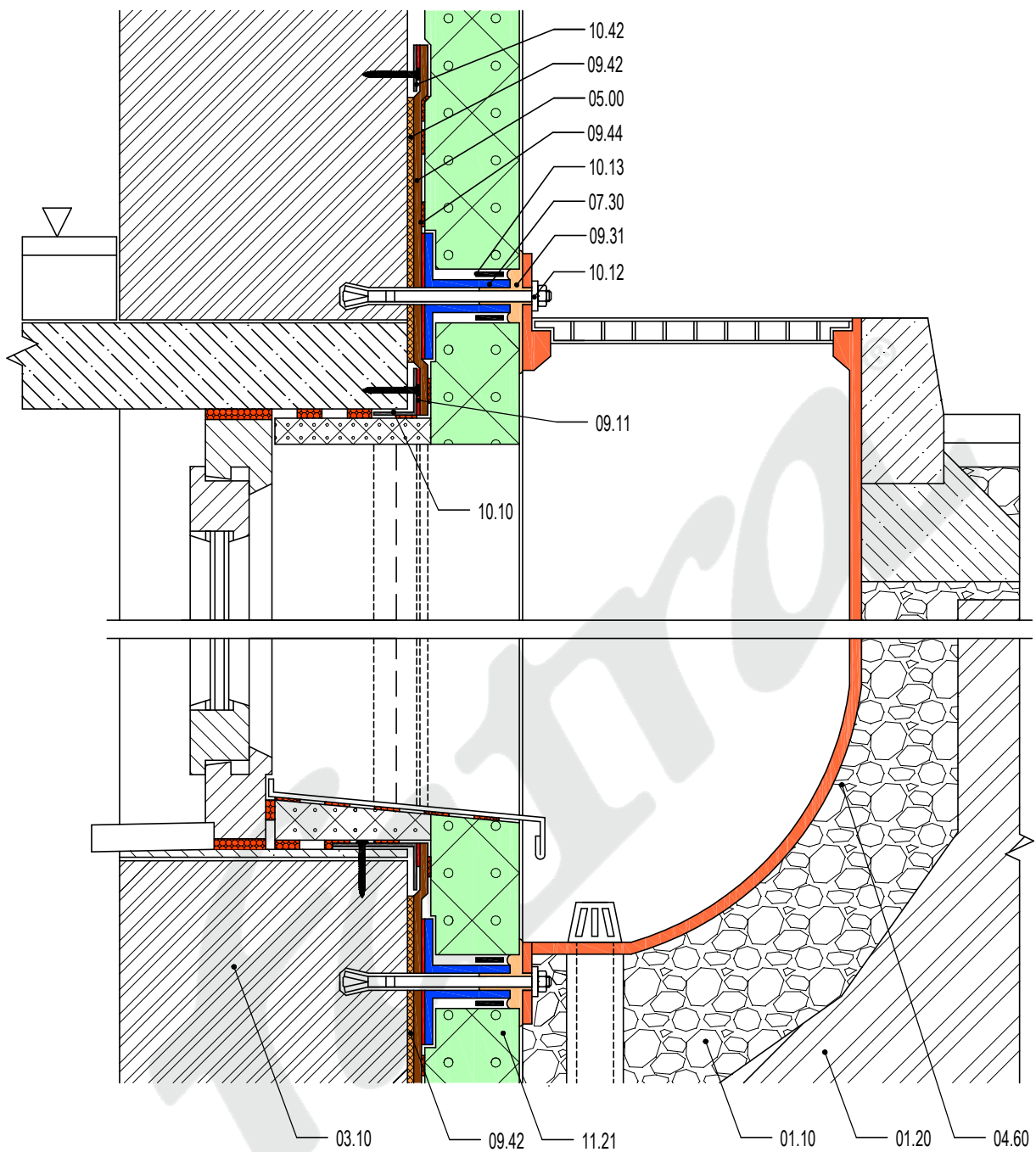




#### LEGEND

#### COMPOSITION

01.10	MINE STONE	09.31	PU SEALANT
01.20	SOIL	09.44	PU FOAM FOR SYSTEMETICS
03.10	BASEMENT WALL	10.10	MECHANICAL FASTENER
04.60	WINDOW WELL	10.12	EXPANSION ANCHOR BOLT
05.00	WATERPROFING MEMBRANE FATRAFOL H	10.42	CURVED PLASTIC COATED SHEET METAL PROFILE FATRANYL
08.10	SEPARATION FABRIC - NON WOVEN GEOTEXTILE	11.21	THERMAL INSULATION XPS
09.11	HOT AIR WELD		



#### LEGEND

#### COMPOSITION

01.10	MINE STONE	09.42	CONTACT ADHESIVE EMFICOL 34033 A
01.20	SOIL	09.44	PU FOAM FOR SYSTEM ETICS
03.10	BASEMENT WALL	10.10	MECHANICAL FASTENER
04.60	WINDOW WELL	10.12	EXPANSION ANCHOR BOLT
05.00	WATERPROOFING MEMBRANE FATRAFOL H	10.13	STAINLESS STEEL WORM GEAR CLAMP
07.30	PVC PENETRATION PRE-SHAPED PIECE	10.42	CURVED PLASTIC COATED SHEET METAL PROFILE FATRANYL
09.11	HOT AIR WELD	11.21	THERMAL INSULATION XPS
09.31	PU SEALANT		

waterproofing of window well - alternative 2

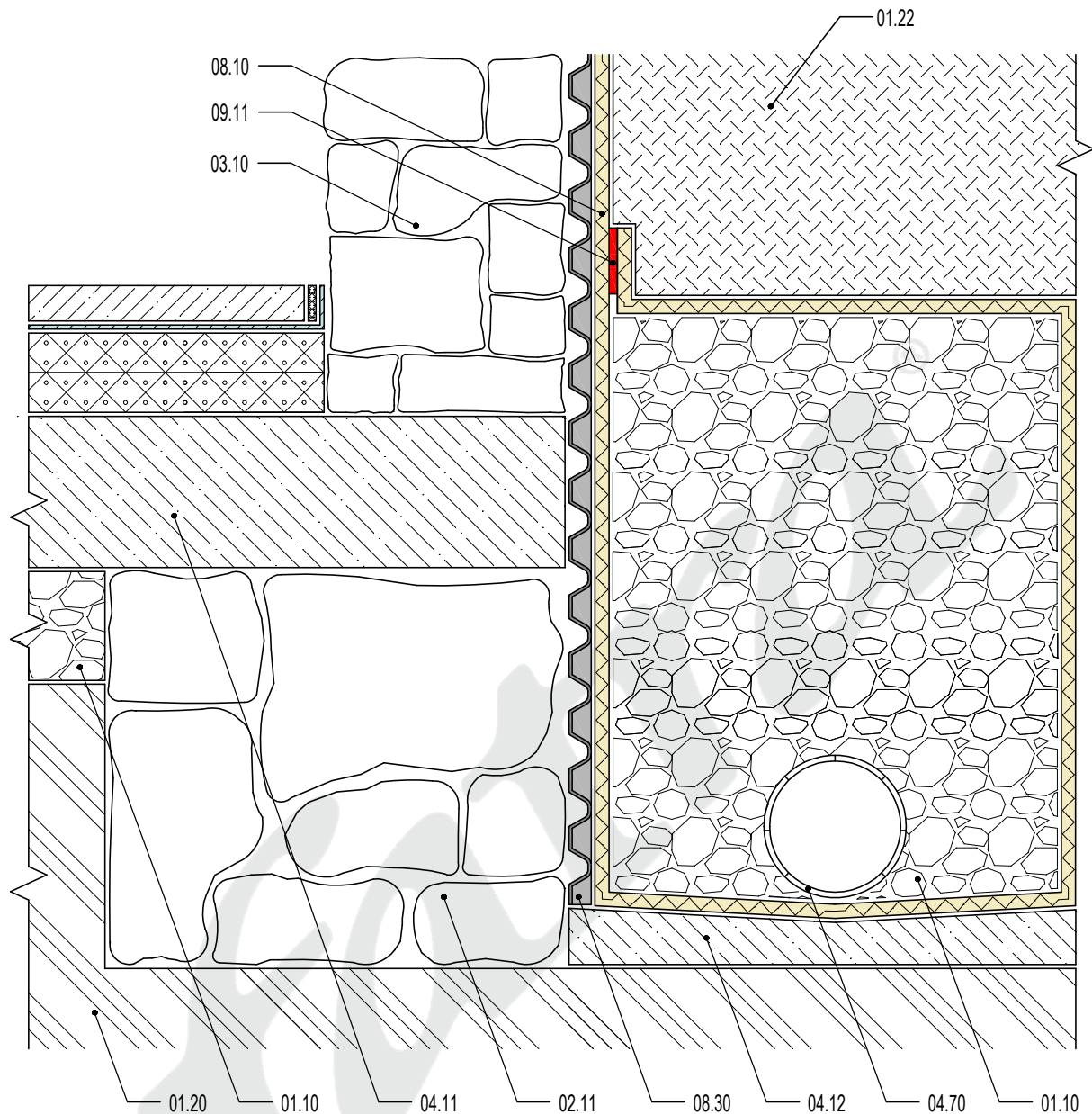
DATE

05/2015

**fatra**

Fatra, a.s., třída Tomáše Bati 1541, 763 61 Napajedla, Czech republic  
tel. +420 577 501 111, fax. +420 577 502 555, e-mail: info@fatrafol.cz, www.fatrafol.cz, www.fatra.cz

**DETAIL 803 H**



#### LEGEND

#### COMPOSITION

01.10	MINE STONE	08.10	SEPARATION FABRIC - NON WOVEN GEOTEXTILE
01.22	COMPACTED TRENCH BACKFILL	08.30	DRAINAGE MEMBRANE
02.11	FOUNDATION WALL (FOOTING)	09.11	HOT AIR WELD
03.10	BASEMENT WALL		
04.11	REINFORCED CONCRETE BASE		
04.12	CONCRETE LAYER MIN. 50 MM		
04.70	DRAINAGE PIPE		